

PSMA2 Antibody

Catalog No: #32680

Package Size: #32680-1 50ul #32680-2 100ul

Orders: order@signalwayantibody.comSupport: tech@signalwayantibody.com

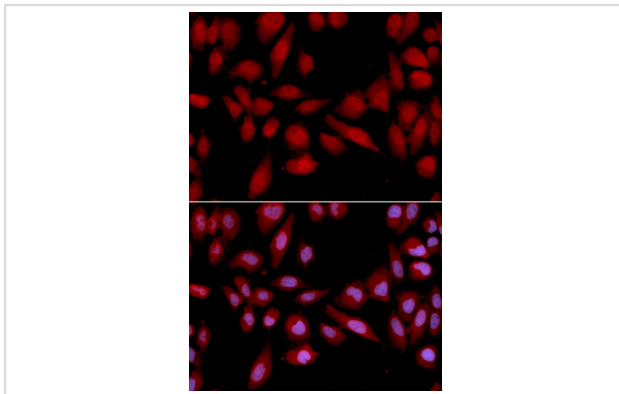
Description

Product Name	PSMA2 Antibody
Host Species	Rabbit
Clonality	Polyclonal
Isotype	IgG
Purification	Affinity purification
Applications	WB,IF
Species Reactivity	Human,Mouse,Rat
Specificity	The antibody detects endogenous level of total PSMA2 protein.
Immunogen Type	Recombinant Protein
Immunogen Description	Recombinant fusion protein of human PSMA2 (NP_002778.1).
Target Name	PSMA2
Other Names	PSMA2;HC3;MU;PMSA2;PSC2
Accession No.	Uniprot:P25787GeneID:5683
Uniprot	P25787
GeneID	5683
SDS-PAGE MW	26kDa
Concentration	1.0mg/ml
Formulation	PBS with 0.02% sodium azide,50% glycerol,pH7.3.
Storage	Store at -20°C. Avoid freeze / thaw cycles.

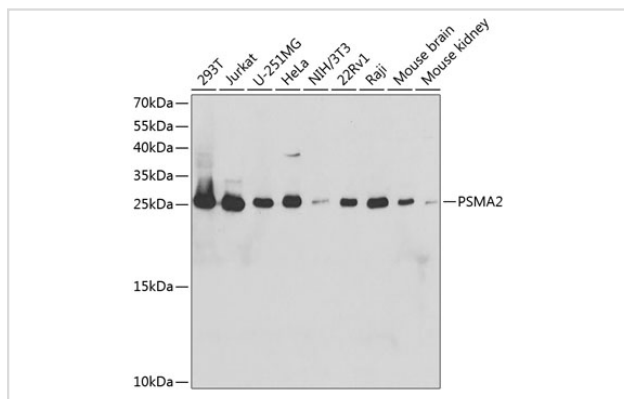
Application Details

WB □ 1:500 - 1:2000 IF □ 1:50 - 1:200

Images



Immunofluorescence analysis of U2OS cells using PSMA2 antibody.



Western blot analysis of extracts of various cell lines, using PSMA2 antibody.

Background

The proteasome is a multicatalytic proteinase complex with a highly ordered ring-shaped 20S core structure. The core structure is composed of 4 rings of 28 non-identical subunits; 2 rings are composed of 7 alpha subunits and 2 rings are composed of 7 beta subunits. Proteasomes are distributed throughout eukaryotic cells at a high concentration and cleave peptides in an ATP/ubiquitin-dependent process in a non-lysosomal pathway. An essential function of a modified proteasome, the immunoproteasome, is the processing of class I MHC peptides. This gene encodes a member of the peptidase T1A family, that is a 20S core alpha subunit.

Note: This product is for in vitro research use only