

PSMC4 Antibody

Catalog No: #32681

Package Size: #32681-1 50ul #32681-2 100ul

Orders: order@signalwayantibody.com

Support: tech@signalwayantibody.com

Description

Product Name	PSMC4 Antibody
Host Species	Rabbit
Clonality	Polyclonal
Purification	Antibodies were purified by affinity purification using immunogen.
Applications	WB IHC IF
Species Reactivity	Hu
Specificity	The antibody detects endogenous level of total PSMC4 protein.
Immunogen Type	Recombinant Protein
Immunogen Description	Recombinant protein of human PSMC4.
Target Name	PSMC4
Other Names	S6; RPT3; TBP7; TBP-7; MIP224
Accession No.	Swiss-Prot:P43686NCBI Gene ID:5704
Uniprot	P43686
GeneID	5704;
SDS-PAGE MW	47KD
Concentration	1.0mg/ml
Formulation	Supplied at 1.0mg/mL in phosphate buffered saline (without Mg ²⁺ and Ca ²⁺), pH 7.4, 150mM NaCl, 0.02% sodium azide and 50% glycerol.
Storage	Store at -20°C

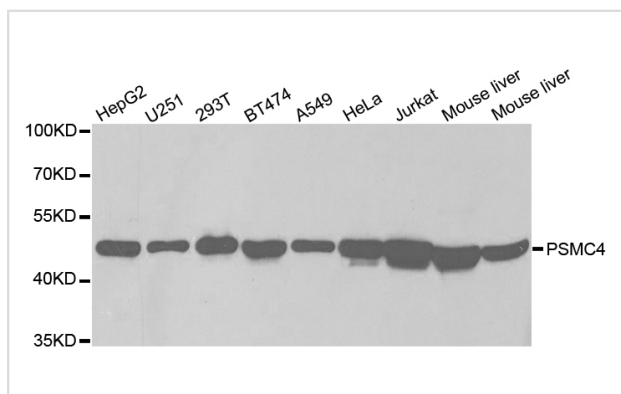
Application Details

Western blotting: 1:500 - 1:2000

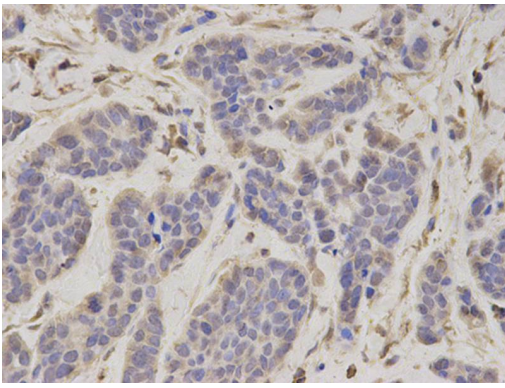
Immunohistochemistry: 1:50 - 1:200

Immunofluorescence: 1:50 - 1:200

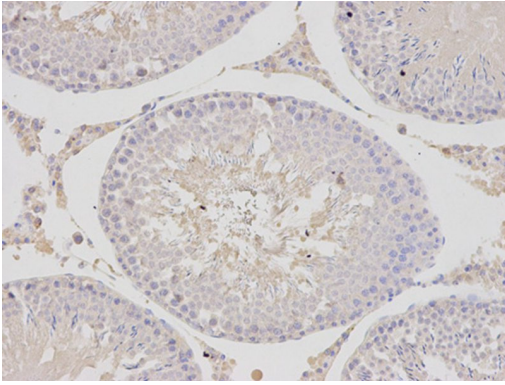
Images



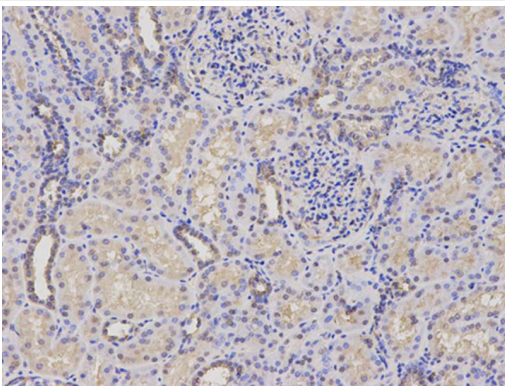
Western blot analysis of extracts of various cell lines, using PSMC4 antibody.



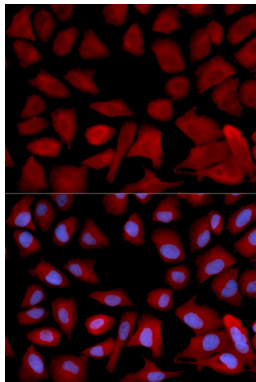
Immunohistochemical analysis of paraffin-embedded human breast cancer using PSMC4 antibody at dilution of 1:100 (400x lens).



Immunohistochemical analysis of paraffin-embedded human kidney using PSMC4 antibody at dilution of 1:100 (200x lens).



Immunohistochemical analysis of paraffin-embedded rat testis using PSMC4 antibody at dilution of 1:100 (200x lens).



Immunofluorescence analysis of U2OS cell using PSMC4 antibody. Blue: DAPI for nuclear staining.

Background

The 26S proteasome is a multicatalytic proteinase complex with a highly ordered structure composed of 2 complexes, a 20S core and a 19S regulator. The 20S core is composed of 4 rings of 28 non-identical subunits; 2 rings are composed of 7 alpha subunits and 2 rings are composed of 7 beta subunits. The 19S regulator is composed of a base, which contains 6 ATPase subunits and 2 non-ATPase subunits, and a lid, which contains up to 10 non-ATPase subunits. Proteasomes are distributed throughout eukaryotic cells at a high concentration and cleave peptides in an ATP/ubiquitin-dependent process in a non-lysosomal pathway. This gene encodes a member of the triple-A family of ATPases that is a component of the 19S regulatory subunit and plays a role in 26S proteasome assembly. The encoded protein interacts with gankyrin, a liver oncoprotein, and may also play a role in Parkinson's disease through interactions with synphilin-1. Alternatively spliced transcript variants encoding multiple isoforms have

been observed for this gene.

Note: This product is for in vitro research use only