

## PSMA4 Antibody

Catalog No: #32683

Package Size: #32683-1 50ul #32683-2 100ul

Orders: order@signalwayantibody.com

Support: tech@signalwayantibody.com

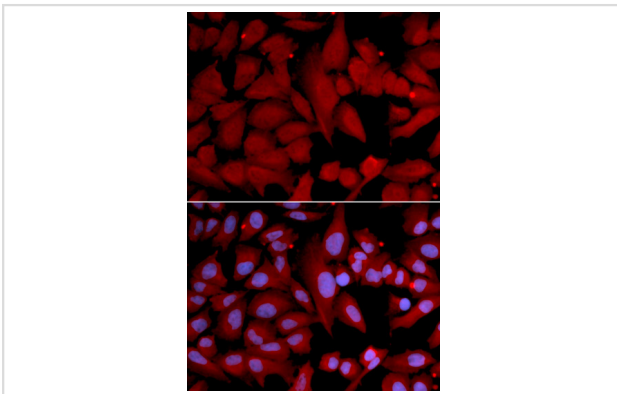
## Description

Product Name	PSMA4 Antibody
Host Species	Rabbit
Clonality	Polyclonal
Purification	Antibodies were purified by affinity purification using immunogen.
Applications	WB,IF
Species Reactivity	Human,Mouse,Rat
Specificity	The antibody detects endogenous level of total PSMA4 protein.
Immunogen Type	Recombinant Protein
Immunogen Description	Recombinant protein of human PSMA4.
Target Name	PSMA4
Other Names	HC9; PSC9; HsT17706;
Accession No.	Swiss-Prot:P25789NCBI Gene ID:5685
Uniprot	P25789
GeneID	5685;
SDS-PAGE MW	29KD
Concentration	1.0mg/ml
Formulation	Supplied at 1.0mg/mL in phosphate buffered saline (without Mg <sup>2+</sup> and Ca <sup>2+</sup> ), pH 7.4, 150mM NaCl, 0.02% sodium azide and 50% glycerol.
Storage	Store at -20°C

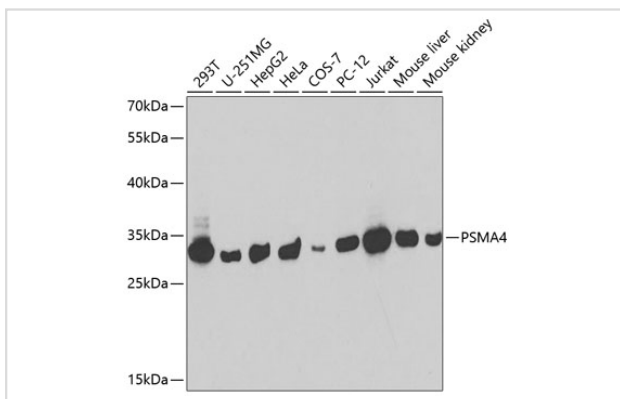
## Application Details

WB □ 1:500 - 1:2000IF □ 1:50 - 1:200IP □ 1:50 - 1:100

## Images



Immunofluorescence analysis of U2OS cells using PSMA4 .  
Blue: DAPI for nuclear staining.



Western blot analysis of extracts of various cell lines, using PSMA4 at 1:1000 dilution.

## Background

The proteasome is a multicatalytic proteinase complex with a highly ordered ring-shaped 20S core structure. The core structure is composed of 4 rings of 28 non-identical subunits; 2 rings are composed of 7 alpha subunits and 2 rings are composed of 7 beta subunits. Proteasomes are distributed throughout eukaryotic cells at a high concentration and cleave peptides in an ATP/ubiquitin-dependent process in a non-lysosomal pathway. An essential function of a modified proteasome, the immunoproteasome, is the processing of class I MHC peptides. This gene encodes a member of the peptidase T1A family, that is a 20S core alpha subunit. Three alternatively spliced transcript variants encoding different isoforms have been found for this gene.

Note: This product is for in vitro research use only