

HAVCR2 Antibody

Catalog No: #32686

Package Size: #32686-1 50ul #32686-2 100ul

Orders: order@signalwayantibody.comSupport: tech@signalwayantibody.com

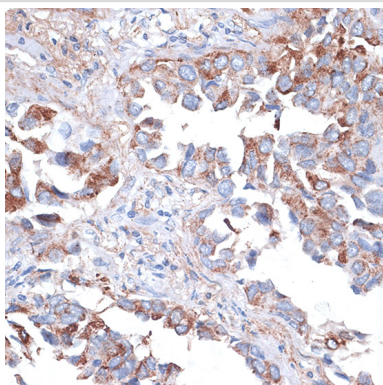
Description

Product Name	HAVCR2 Antibody
Host Species	Rabbit
Clonality	Polyclonal
Isotype	IgG
Purification	Affinity purification
Applications	WB,IHC
Species Reactivity	Human,Mouse,Rat
Specificity	The antibody detects endogenous level of total HAVCR2 protein.
Immunogen Type	Recombinant Protein
Immunogen Description	Recombinant fusion protein of human TIM-3/HAVCR2 (NP_116171.3).
Target Name	HAVCR2
Other Names	HAVCR2;CD366;HAVcr-2;KIM-3;TIM3;TIMD-3;TIMD3;Tim-3
Accession No.	Uniprot:Q8TDQ0GeneID:84868
Uniprot	Q8TDQ0
GeneID	84868
SDS-PAGE MW	45-70kDa
Concentration	1.0mg/ml
Formulation	PBS with 0.02% sodium azide,50% glycerol,pH7.3.
Storage	Store at -20°C. Avoid freeze / thaw cycles.

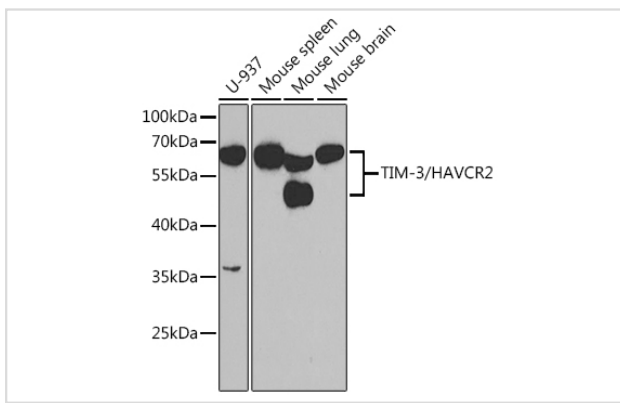
Application Details

WB □ 1:500 - 1:1000 IHC □ 1:50 - 1:200

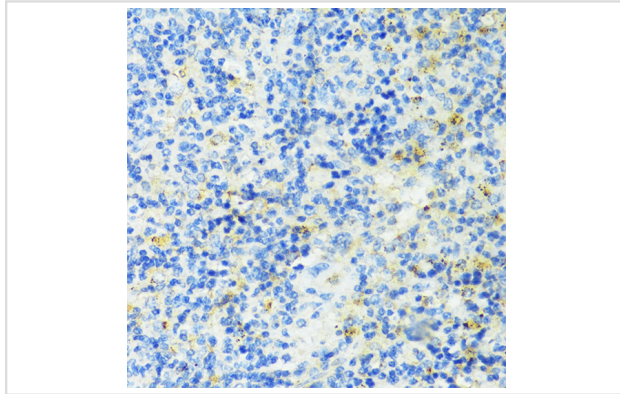
Images



Immunohistochemistry of paraffin-embedded human lung cancer using TIM-3/HAVCR2 antibody.



Western blot analysis of extracts of various cell lines, using TIM-3/HAVCR2 antibody.



Immunohistochemistry of paraffin-embedded mouse spleen using TIM-3/HAVCR2 antibody.

Background

The protein encoded by this gene belongs to the immunoglobulin superfamily, and TIM family of proteins. CD4-positive T helper lymphocytes can be divided into types 1 (Th1) and 2 (Th2) on the basis of their cytokine secretion patterns. Th1 cells are involved in cell-mediated immunity to intracellular pathogens and delayed-type hypersensitivity reactions, whereas, Th2 cells are involved in the control of extracellular helminthic infections and the promotion of atopic and allergic diseases. This protein is a Th1-specific cell surface protein that regulates macrophage activation, and inhibits Th1-mediated auto- and alloimmune responses, and promotes immunological tolerance.

Note: This product is for in vitro research use only