

ARHGEF2 Antibody

Catalog No: #32701

Package Size: #32701-1 50ul #32701-2 100ul

Orders: order@signalwayantibody.comSupport: tech@signalwayantibody.com

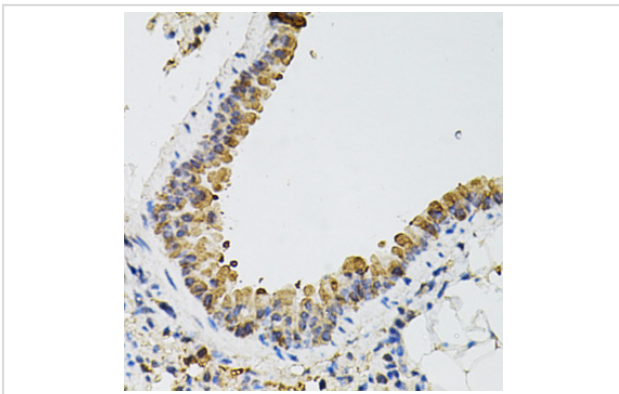
Description

| | |
|-----------------------|--|
| Product Name | ARHGEF2 Antibody |
| Host Species | Rabbit |
| Clonality | Polyclonal |
| Purification | Antibodies were purified by affinity purification using immunogen. |
| Applications | IHC |
| Species Reactivity | Mouse |
| Specificity | The antibody detects endogenous level of total ARHGEF2 protein. |
| Immunogen Type | Recombinant Protein |
| Immunogen Description | Recombinant protein of human ARHGEF2. |
| Target Name | ARHGEF2 |
| Other Names | GEF; P40; GEFH1; LFP40; GEF-H1 |
| Accession No. | Swiss-Prot:Q92974NCBI Gene ID:9181 |
| Uniprot | Q92974 |
| GeneID | 9181; |
| SDS-PAGE MW | 111KD |
| Concentration | 1.0mg/ml |
| Formulation | Supplied at 1.0mg/mL in phosphate buffered saline (without Mg ²⁺ and Ca ²⁺), pH 7.4, 150mM NaCl, 0.02% sodium azide and 50% glycerol. |
| Storage | Store at -20°C |

Application Details

IHC 1:50 - 1:100

Images



Immunohistochemistry of paraffin-embedded mouse lung using ARHGEF2 at dilution of 1:100 (40x lens).

Background

Rho GTPases play a fundamental role in numerous cellular processes that are initiated by extracellular stimuli that work through G protein coupled receptors. The encoded protein may form complex with G proteins and stimulate rho-dependent signals. Alternatively spliced transcript variants encoding different isoforms have been identified.

Note: This product is for in vitro research use only