

## ESR2 Antibody

Catalog No: #32704

Package Size: #32704-1 50ul #32704-2 100ul

Orders: order@signalwayantibody.com

Support: tech@signalwayantibody.com

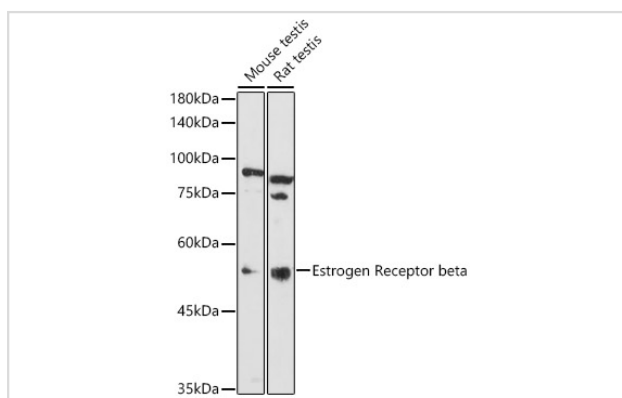
## Description

Product Name	ESR2 Antibody
Host Species	Rabbit
Clonality	Polyclonal
Isotype	IgG
Purification	Affinity purification
Applications	WB
Species Reactivity	Human,Mouse,Rat
Specificity	The antibody detects endogenous level of total ESR2 protein.
Immunogen Type	Recombinant Protein
Immunogen Description	Recombinant fusion protein of human Estrogen Receptor beta (NP_001201832.1).
Target Name	ESR2
Other Names	ESR2;ER-BETA;ESR-BETA;ESRB;ESTRB;Erb;NR3A2
Accession No.	Uniprot:Q92731GeneID:2100
Uniprot	Q92731
GeneID	2100
SDS-PAGE MW	55KDa
Concentration	1.0mg/ml
Formulation	PBS with 0.02% sodium azide,50% glycerol,pH7.3.
Storage	Store at -20°C. Avoid freeze / thaw cycles.

## Application Details

WB □ 1:500 - 1:2000

## Images



Western blot analysis of extracts of various cell lines, using Estrogen Receptor beta antibody.

## Background

---

This gene encodes a member of the family of estrogen receptors and superfamily of nuclear receptor transcription factors. The gene product contains an N-terminal DNA binding domain and C-terminal ligand binding domain and is localized to the nucleus, cytoplasm, and mitochondria. Upon binding to 17beta-estradiol or related ligands, the encoded protein forms homo- or hetero-dimers that interact with specific DNA sequences to activate transcription. Some isoforms dominantly inhibit the activity of other estrogen receptor family members. Several alternatively spliced transcript variants of this gene have been described, but the full-length nature of some of these variants has not been fully characterized.

---

Note: This product is for in vitro research use only