

PLK1 Antibody

Catalog No: #32706

Package Size: #32706-1 50ul #32706-2 100ul

Orders: order@signalwayantibody.comSupport: tech@signalwayantibody.com

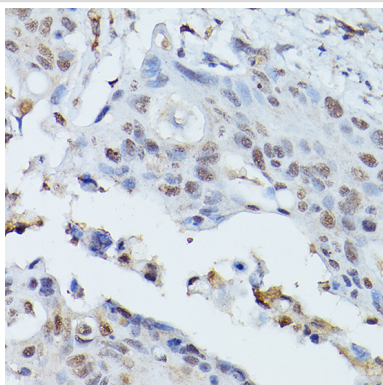
Description

Product Name	PLK1 Antibody
Host Species	Rabbit
Clonality	Polyclonal
Isotype	IgG
Purification	Affinity purification
Applications	WB,IHC,IF
Species Reactivity	Human,Mouse,Rat
Specificity	The antibody detects endogenous level of total PLK1 protein.
Immunogen Type	Recombinant Protein
Immunogen Description	Recombinant fusion protein of human PLK1 (NP_005021.2).
Target Name	PLK1
Other Names	PLK1;PLK;STPK13
Accession No.	Uniprot:P53350GenelD:5347
Uniprot	P53350
GenelD	5347
SDS-PAGE MW	62KDa
Concentration	1.0mg/ml
Formulation	PBS with 0.02% sodium azide,50% glycerol,pH7.3.
Storage	Store at -20°C. Avoid freeze / thaw cycles.

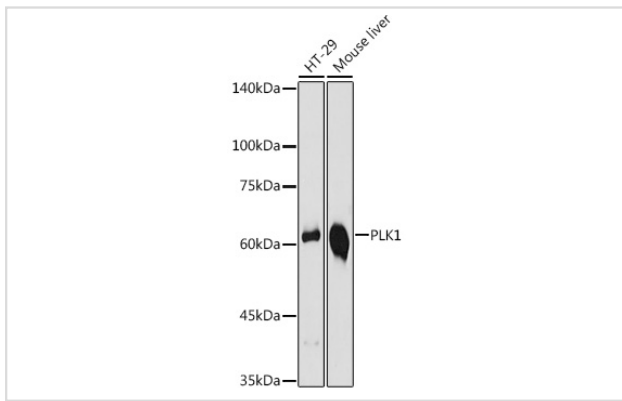
Application Details

WB □ 1:500 - 1:2000 IHC □ 1:50 - 1:200 IF □ 1:50 - 1:200

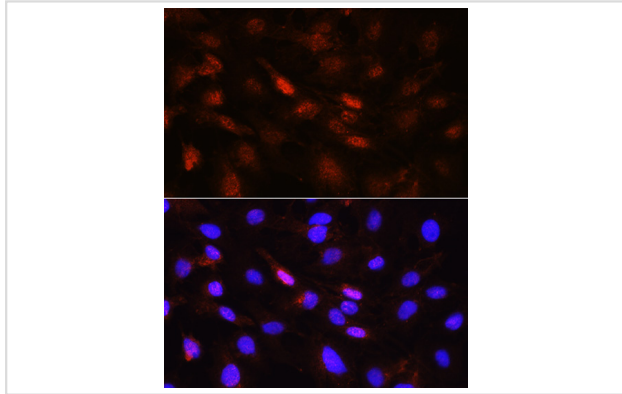
Images



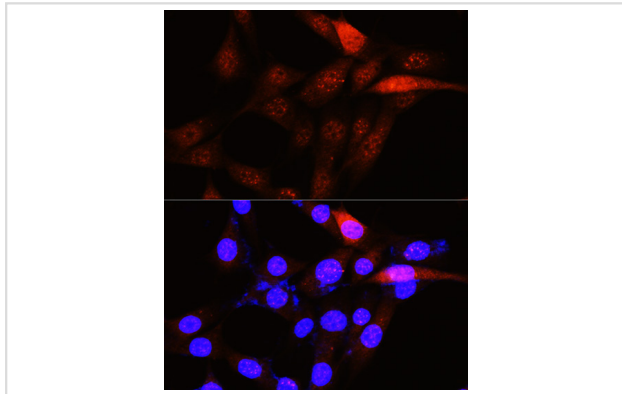
Immunohistochemistry of paraffin-embedded human colon carcinoma using PLK1 Rabbit pAb.



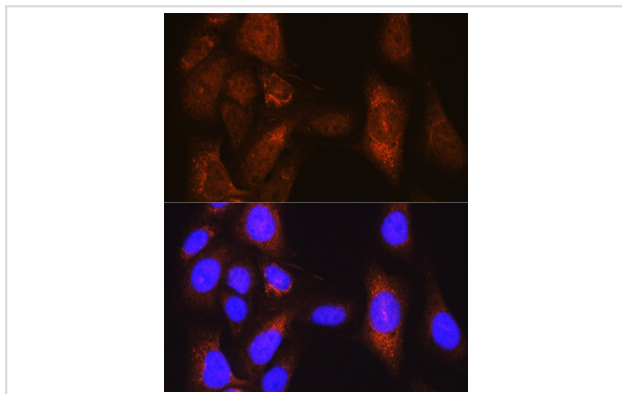
Western blot analysis of extracts of various cell lines, using PLK1 antibody.



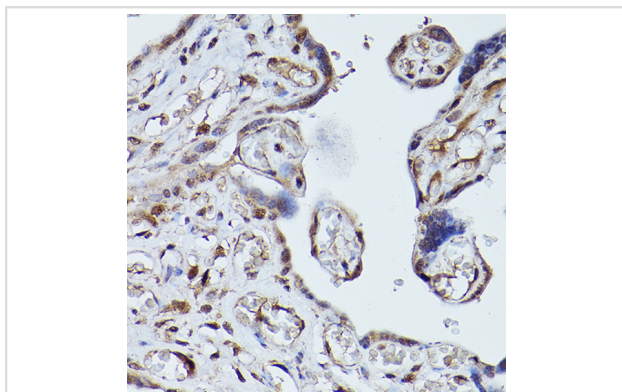
Immunofluorescence analysis of C6 cells using PLK1 Rabbit pAb.



Immunofluorescence analysis of NIH-3T3 cells using PLK1 Rabbit pAb.



Immunofluorescence analysis of U-2 OS cells using PLK1 Rabbit pAb.



Immunohistochemistry of paraffin-embedded human placenta using PLK1 Rabbit pAb.

Background

The Ser/Thr protein kinase encoded by this gene belongs to the CDC5/Polo subfamily. It is highly expressed during mitosis and elevated levels are found in many different types of cancer. Depletion of this protein in cancer cells dramatically inhibited cell proliferation and induced apoptosis; hence, it is a target for cancer therapy.

Note: This product is for in vitro research use only