

MMP14 Antibody

Catalog No: #32707

Package Size: #32707-1 50ul #32707-2 100ul

Orders: order@signalwayantibody.comSupport: tech@signalwayantibody.com

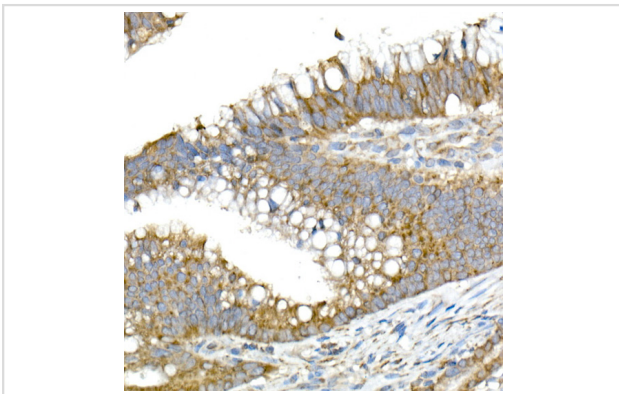
Description

Product Name	MMP14 Antibody
Host Species	Rabbit
Clonality	Polyclonal
Isotype	IgG
Purification	Affinity purification
Applications	WB,IHC,IF
Species Reactivity	Human,Mouse,Rat
Specificity	The antibody detects endogenous level of total MMP14 protein.
Immunogen Type	Recombinant Protein
Immunogen Description	Recombinant protein of human MMP14/MMP14/MT1-MMP
Target Name	MMP14
Other Names	MMP14;MMP-14;MMP-X1;MT-MMP;MT-MMP 1;MT1-MMP;MT1MMP;MTMMP1;WNCHRS;MT-MMP1
Accession No.	Uniprot:P50281GeneID:4323
Uniprot	P50281
GeneID	4323
SDS-PAGE MW	60KDa
Concentration	1.0mg/ml
Formulation	PBS with 0.02% sodium azide,50% glycerol,pH7.3.
Storage	Store at -20°C. Avoid freeze / thaw cycles.

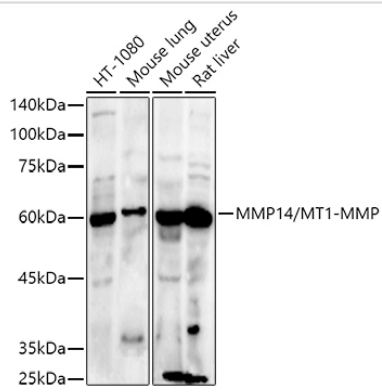
Application Details

WB □ 1:500 - 1:2000 IHC □ 1:50 - 1:100 IF □ 1:50 - 1:200

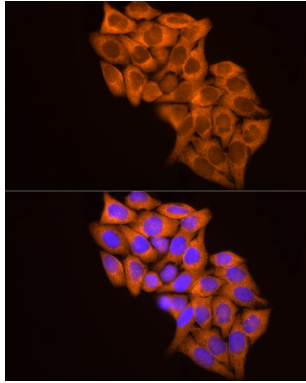
Images



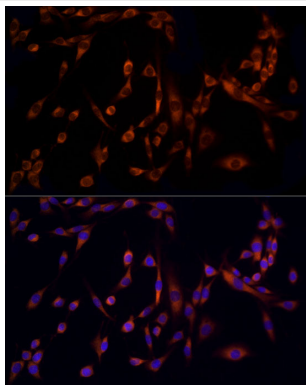
Immunohistochemistry of paraffin-embedded human colon carcinoma using MMP14/MT1-MMP Rabbit pAb.



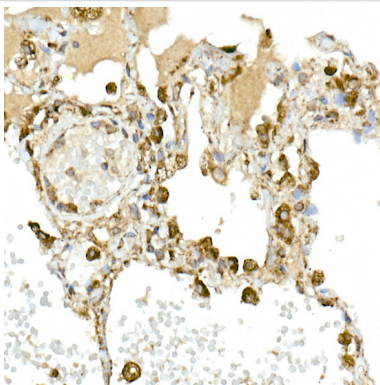
Western blot analysis of extracts of various cell lines, using MMP14/MT1-MMP antibody.



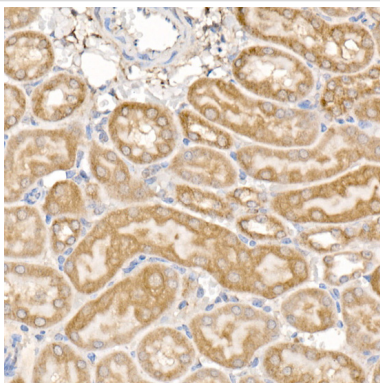
Immunofluorescence analysis of HeLa cells using MMP14/MT1-MMP Rabbit pAb.



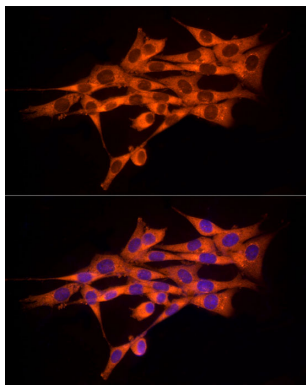
Immunofluorescence analysis of PC-12 cells using MMP14/MT1-MMP Rabbit pAb.



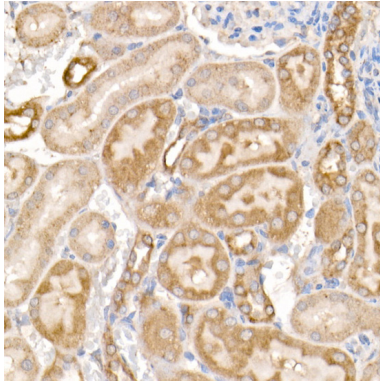
Immunohistochemistry of paraffin-embedded human lung using MMP14/MT1-MMP Rabbit pAb.



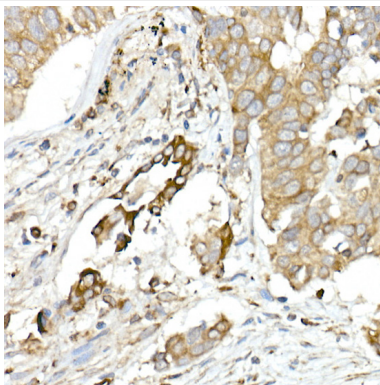
Immunohistochemistry of paraffin-embedded mouse kidney using MMP14/MT1-MMP Rabbit pAb.



Immunofluorescence analysis of NIH/3T3 cells using MMP14/MT1-MMP Rabbit pAb.



Immunohistochemistry of paraffin-embedded rat kidney using MMP14/MT1-MMP Rabbit pAb.



Immunohistochemistry of paraffin-embedded human lung cancer using MMP14/MT1-MMP Rabbit pAb.

Background

Proteins of the matrix metalloproteinase (MMP) family are involved in the breakdown of extracellular matrix in normal physiological processes, such as embryonic development, reproduction, and tissue remodeling, as well as in disease processes, such as arthritis and metastasis. Most MMP's are secreted as inactive proproteins which are activated when cleaved by extracellular proteinases. However, the protein encoded by this gene is a member of the membrane-type MMP (MT-MMP) subfamily; each member of this subfamily contains a potential transmembrane domain suggesting that these proteins are expressed at the cell surface rather than secreted. This protein activates MMP2 protein, and this activity may be involved in tumor invasion.

Note: This product is for in vitro research use only