

GZMB Antibody

Catalog No: #32711

Package Size: #32711-1 50ul #32711-2 100ul

Orders: order@signalwayantibody.com

Support: tech@signalwayantibody.com

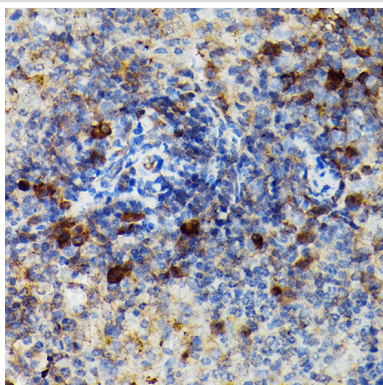
Description

Product Name	GZMB Antibody
Host Species	Rabbit
Clonality	Polyclonal
Isotype	IgG
Purification	Affinity purification
Applications	WB,IHC,IF
Species Reactivity	Human,Mouse,Rat
Specificity	The antibody detects endogenous level of total GZMB protein.
Immunogen Type	Recombinant Protein
Immunogen Description	Recombinant fusion protein of human Granzyme B (NP_004122.2).
Target Name	GZMB
Other Names	C11;CCPI;CGL-1;CGL1;CSP-B;CSPB;CTLA1;CTSG1;HLP;SECT;Granzyme B;GZMB
Accession No.	Uniprot:P10144GeneID:3002
Uniprot	P10144
GeneID	3002
SDS-PAGE MW	30KDa
Concentration	1.0mg/ml
Formulation	PBS with 0.02% sodium azide,50% glycerol,pH7.3.
Storage	Store at -20°C. Avoid freeze / thaw cycles.

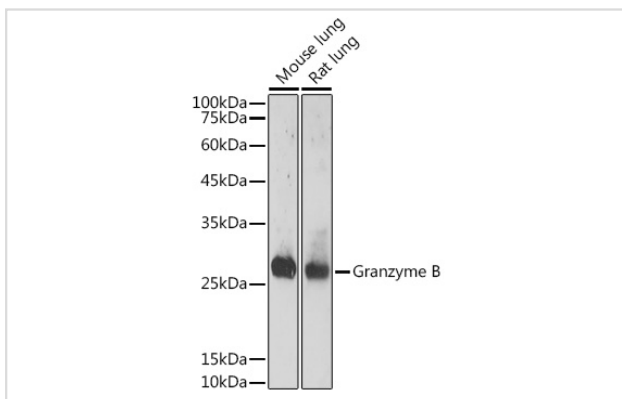
Application Details

WB 1:500 - 1:2000 IHC 1:50 - 1:200 IF 1:50 - 1:200

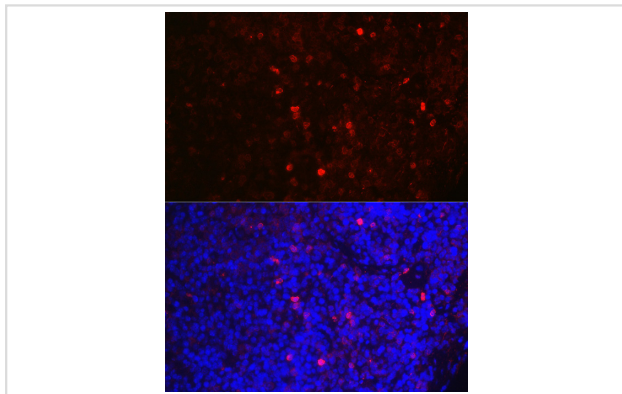
Images



Immunohistochemistry of paraffin-embedded mouse spleen using Granzyme B Rabbit pAb.



Western blot analysis of extracts of various cell lines, using Granzyme B antibody.



Immunofluorescence analysis of mouse spleen using Granzyme B Rabbit pAb.

Background

Cytolytic T lymphocytes (CTL) and natural killer (NK) cells share the remarkable ability to recognize, bind, and lyse specific target cells. They are thought to protect their host by lysing cells bearing on their surface 'nonself' antigens, usually peptides or proteins resulting from infection by intracellular pathogens. The protein encoded by this gene is crucial for the rapid induction of target cell apoptosis by CTL in cell-mediated immune response.

Note: This product is for in vitro research use only