

TGFBI Antibody

Catalog No: #32714

Package Size: #32714-1 50ul #32714-2 100ul

Orders: order@signalwayantibody.com

Support: tech@signalwayantibody.com

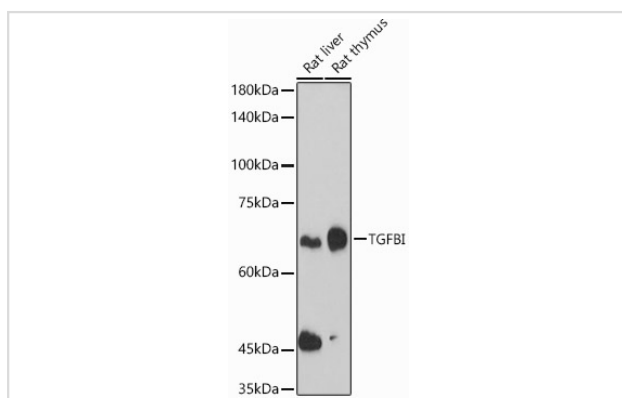
Description

Product Name	TGFBI Antibody
Host Species	Rabbit
Clonality	Polyclonal
Isotype	IgG
Purification	Affinity purification
Applications	WB,IHC,IF
Species Reactivity	Human,Mouse,Rat
Specificity	The antibody detects endogenous level of total TGFBI protein.
Immunogen Type	Recombinant Protein
Immunogen Description	Recombinant fusion protein of human TGF beta induced TGF beta induced TGFBI (NP_000349.1).
Target Name	TGFBI
Other Names	TGFBI;BIGH3;CDB1;CDG2;CDGG1;CSD;CSD1;CSD2;CSD3;EBMD;LCD1
Accession No.	Uniprot:Q15582GeneID:7045
Uniprot	Q15582
GeneID	7045
SDS-PAGE MW	70KDa
Concentration	1.0mg/ml
Formulation	PBS with 0.02% sodium azide,50% glycerol,pH7.3.
Storage	Store at -20°C. Avoid freeze / thaw cycles.

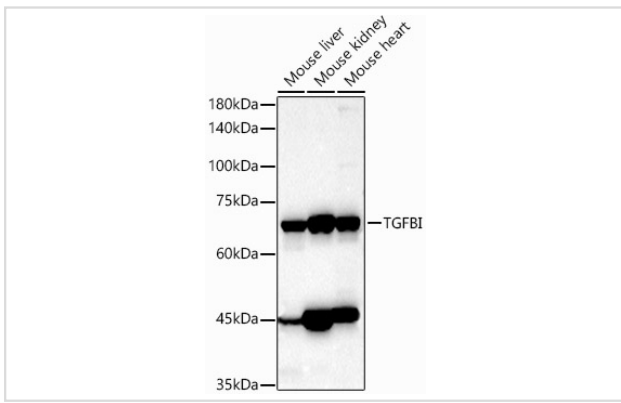
Application Details

WB 1:500 - 1:2000 IHC 1:50 - 1:200 IF 1:50 - 1:200

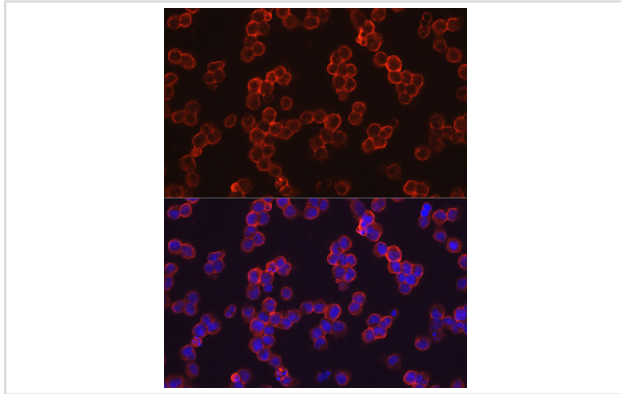
Images



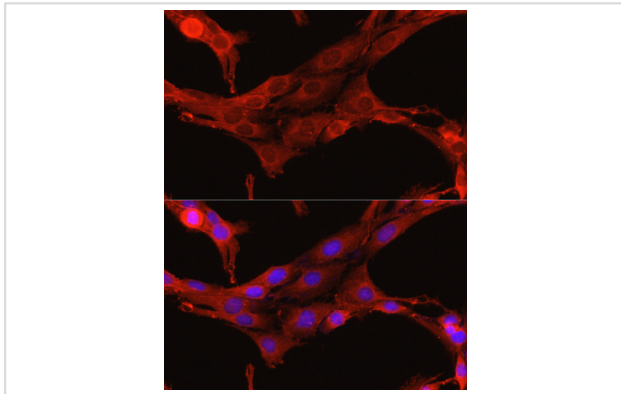
Western blot analysis of extracts of various cell lines, using TGF beta induced TGFBI antibody.



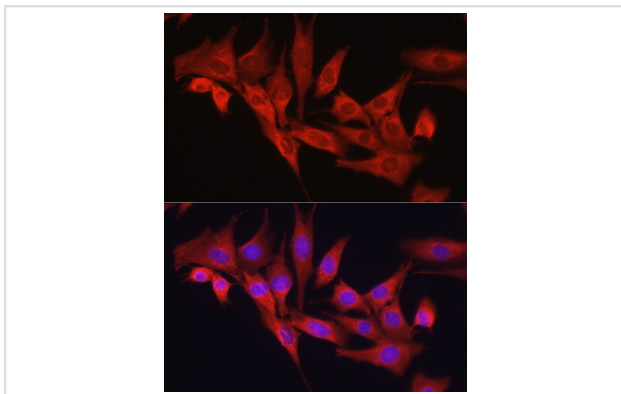
Western blot analysis of extracts of various cell lines, using TGF beta induced TGFB1 antibody.



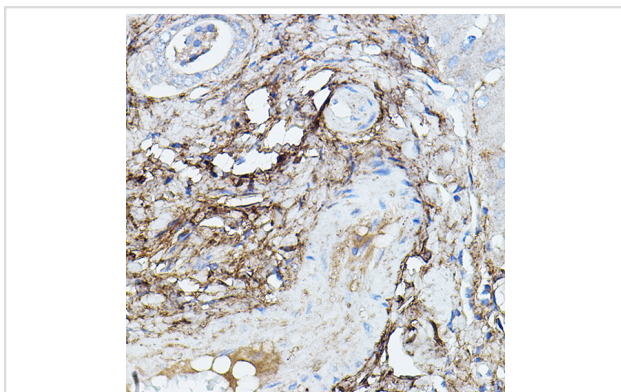
Immunofluorescence analysis of Y79 cells using TGF beta induced TGFB1 antibody.



Immunofluorescence analysis of PC-12 cells using TGF beta induced TGFB1 antibody.



Immunofluorescence analysis of NIH/3T3 cells using TGF beta induced TGFB1 antibody.



Immunohistochemistry of paraffin-embedded human liver cancer using TGF beta induced TGFB1 Rabbit pAb.

Background

This gene encodes an RGD-containing protein that binds to type I, II and IV collagens. The RGD motif is found in many extracellular matrix proteins modulating cell adhesion and serves as a ligand recognition sequence for several integrins. This protein plays a role in cell-collagen interactions and may be involved in endochondrial bone formation in cartilage. The protein is induced by transforming growth factor-beta and acts to inhibit cell adhesion. Mutations in this gene are associated with multiple types of corneal dystrophy.

Note: This product is for in vitro research use only