

SKP1 Antibody

Catalog No: #32718

Package Size: #32718-1 50ul #32718-2 100ul

Orders: order@signalwayantibody.com

Support: tech@signalwayantibody.com

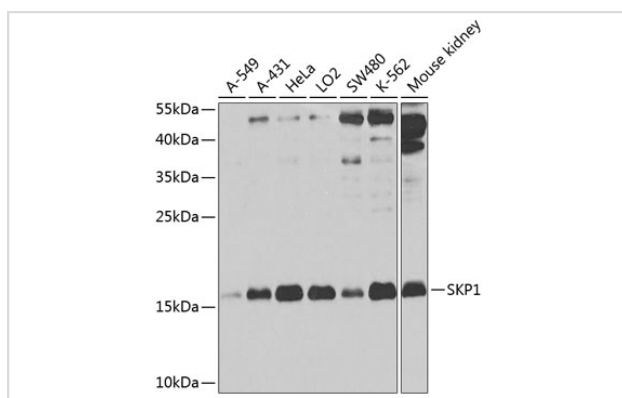
Description

Product Name	SKP1 Antibody
Host Species	Rabbit
Clonality	Polyclonal
Isotype	IgG
Purification	Affinity purification
Applications	WB
Species Reactivity	Human,Mouse
Specificity	The antibody detects endogenous level of total SKP1 protein.
Immunogen Type	Recombinant Protein
Immunogen Description	Recombinant fusion protein of human SKP1 (NP_733779.1).
Target Name	SKP1
Other Names	SKP1;EMC19;OCP-II;OCP2;SKP1A;TCEB1L;p19A
Accession No.	Uniprot:P63208GeneID:6500
Uniprot	P63208
GeneID	6500
SDS-PAGE MW	19kDa
Concentration	1.0mg/ml
Formulation	PBS with 0.02% sodium azide,50% glycerol,pH7.3.
Storage	Store at -20°C. Avoid freeze / thaw cycles.

Application Details

WB □ 1:500 - 1:2000

Images



Western blot analysis of extracts of various cell lines, using SKP1 antibody.

Background

This gene encodes a component of SCF complexes, which are composed of this protein, cullin 1, a ring-box protein, and one member of the F-box family of proteins. This protein binds directly to the F-box motif found in F-box proteins. SCF complexes are involved in the regulated ubiquitination of specific protein substrates, which targets them for degradation by the proteasome. Specific F-box proteins recognize different target protein(s), and many specific SCF substrates have been identified including regulators of cell cycle progression and development. Studies have also characterized the protein as an RNA polymerase II elongation factor. Alternative splicing of this gene results in two transcript variants. A related pseudogene has been identified on chromosome 7.

Note: This product is for in vitro research use only