

AIFM1 Antibody

Catalog No: #32720

Package Size: #32720-1 50ul #32720-2 100ul

Orders: order@signalwayantibody.com

Support: tech@signalwayantibody.com

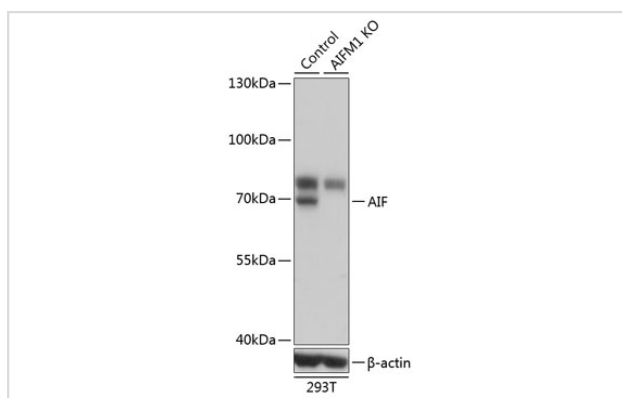
Description

| | |
|-----------------------|--|
| Product Name | AIFM1 Antibody |
| Host Species | Rabbit |
| Clonality | Polyclonal |
| Purification | Antibodies were purified by affinity purification using immunogen. |
| Applications | WB,IHC,IF |
| Species Reactivity | Human,Mouse,Rat |
| Specificity | The antibody detects endogenous level of total AIFM1 protein. |
| Immunogen Type | Recombinant Protein |
| Immunogen Description | Recombinant protein of human AIFM1. |
| Target Name | AIFM1 |
| Other Names | AIF; CMTX4; COWCK; PDCD8; COXPD6 |
| Accession No. | Swiss-Prot:O95831NCBI Gene ID:9131 |
| Uniprot | O95831 |
| GeneID | 9131; |
| SDS-PAGE MW | 66KD |
| Concentration | 1.0mg/ml |
| Formulation | Supplied at 1.0mg/mL in phosphate buffered saline (without Mg ²⁺ and Ca ²⁺), pH 7.4, 150mM NaCl, 0.02% sodium azide and 50% glycerol. |
| Storage | Store at -20°C |

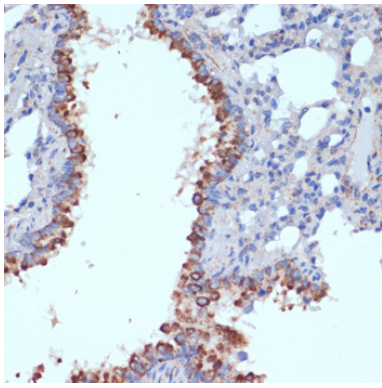
Application Details

WB 1:500 - 1:2000 IHC 1:50 - 1:200 IF 1:50 - 1:200 IP 1:50 - 1:100

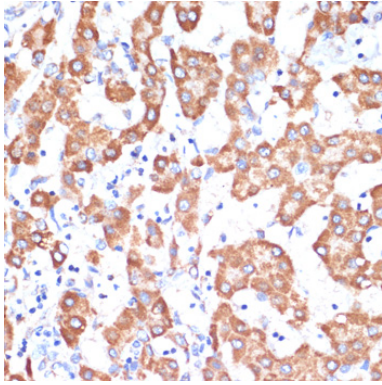
Images



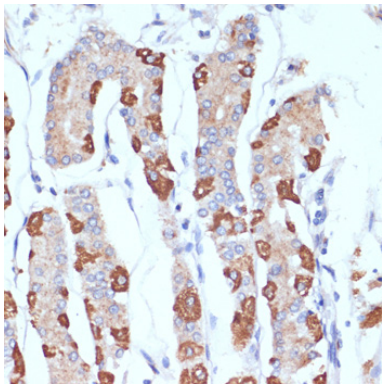
Western blot analysis of extracts from normal (control) and AIF knockout (KO) 293T cells, using AIF at 1:1000 dilution.



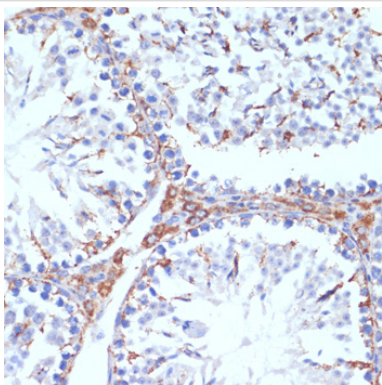
Immunohistochemistry of paraffin-embedded rat lung using AIF at dilution of 1:100 (40x lens).



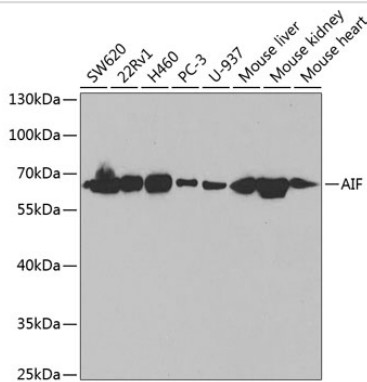
Immunohistochemistry of paraffin-embedded human liver cancer using AIF at dilution of 1:100 (40x lens).



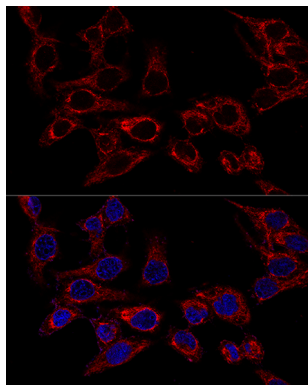
Immunohistochemistry of paraffin-embedded human stomach using AIF at dilution of 1:100 (40x lens).



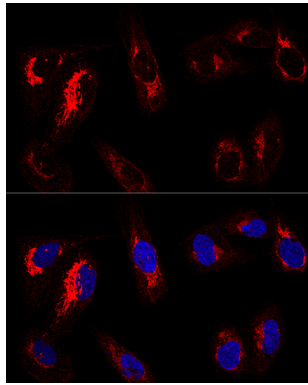
Immunohistochemistry of paraffin-embedded mouse testis using AIF at dilution of 1:100 (40x lens).



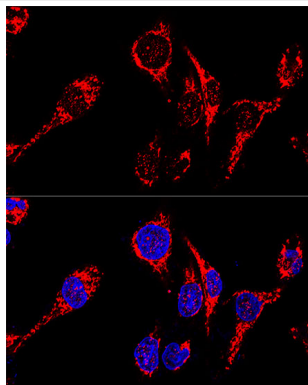
Western blot analysis of extracts of various cell lines, using AIF at 1:1000 dilution.



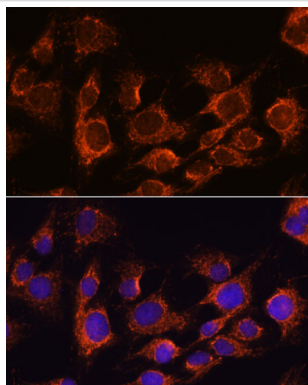
Confocal immunofluorescence analysis of HeLa cells using [KO Validated] AIF Polyclonal at dilution of 1:50. Blue: DAPI for nuclear staining.



Confocal immunofluorescence analysis of U2OS cells using [KO Validated] AIF Polyclonal at dilution of 1:50. Blue: DAPI for nuclear staining.



Confocal immunofluorescence analysis of HeLa cells using AIFM1 at dilution of 1:200. Blue: DAPI for nuclear staining.



Immunofluorescence analysis of C6 cells using AIF at dilution of 1:100. Blue: DAPI for nuclear staining.

Background

This gene encodes a flavoprotein essential for nuclear disassembly in apoptotic cells, and it is found in the mitochondrial intermembrane space in healthy cells. Induction of apoptosis results in the translocation of this protein to the nucleus where it affects chromosome condensation and fragmentation. In addition, this gene product induces mitochondria to release the apoptogenic proteins cytochrome c and caspase-9. Mutations in this gene cause combined oxidative phosphorylation deficiency 6, which results in a severe mitochondrial encephalomyopathy. Alternative splicing results in multiple transcript variants. A related pseudogene has been identified on chromosome 10.

Note: This product is for in vitro research use only