

MAP2K6 Antibody

Catalog No: #32725

Package Size: #32725-1 50ul #32725-2 100ul

Orders: order@signalwayantibody.com

Support: tech@signalwayantibody.com

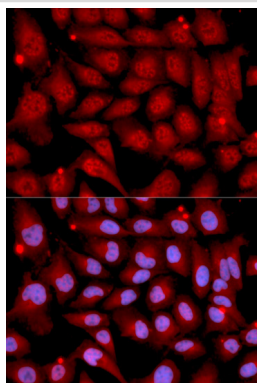
Description

Product Name	MAP2K6 Antibody
Host Species	Rabbit
Clonality	Polyclonal
Purification	Antibodies were purified by affinity purification using immunogen.
Applications	WB,IF
Species Reactivity	Human,Mouse,Rat
Specificity	The antibody detects endogenous level of total MAP2K6 protein.
Immunogen Type	Recombinant Protein
Immunogen Description	Recombinant protein of human MAP2K6.
Target Name	MAP2K6
Other Names	MAPKK6; MEK6; MKK6; PRKMK6; SAPKK3
Accession No.	Swiss-Prot:P52564NCBI Gene ID:5608
Uniprot	P52564
GeneID	5608;
SDS-PAGE MW	37kD KD
Concentration	1.0mg/ml
Formulation	Supplied at 1.0mg/mL in phosphate buffered saline (without Mg ²⁺ and Ca ²⁺), pH 7.4, 150mM NaCl, 0.02% sodium azide and 50% glycerol.
Storage	Store at -20°C

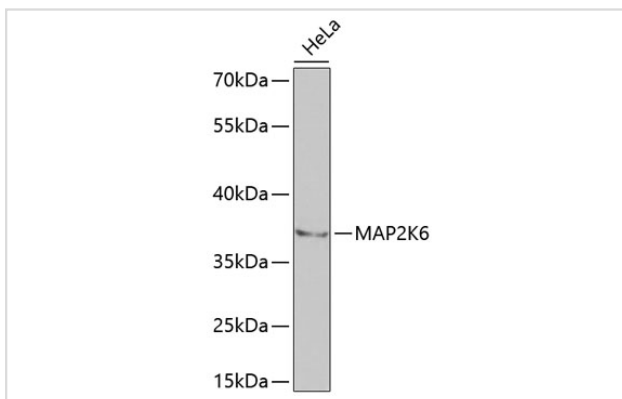
Application Details

WB □ 1:500 - 1:2000IF □ 1:50 - 1:200

Images



Immunofluorescence analysis of U2OS cells using MAP2K6 .
Blue: DAPI for nuclear staining.



Western blot analysis of extracts of HeLa cells, using MAP2K6 at 1:1000 dilution.

Background

This gene encodes a member of the dual specificity protein kinase family, which functions as a mitogen-activated protein (MAP) kinase kinase. MAP kinases, also known as extracellular signal-regulated kinases (ERKs), act as an integration point for multiple biochemical signals. This protein phosphorylates and activates p38 MAP kinase in response to inflammatory cytokines or environmental stress. As an essential component of p38 MAP kinase mediated signal transduction pathway, this gene is involved in many cellular processes such as stress induced cell cycle arrest, transcription activation and apoptosis.

Note: This product is for in vitro research use only