

CLDN11 Antibody

Catalog No: #32740

Package Size: #32740-1 50ul #32740-2 100ul

Orders: order@signalwayantibody.com

Support: tech@signalwayantibody.com

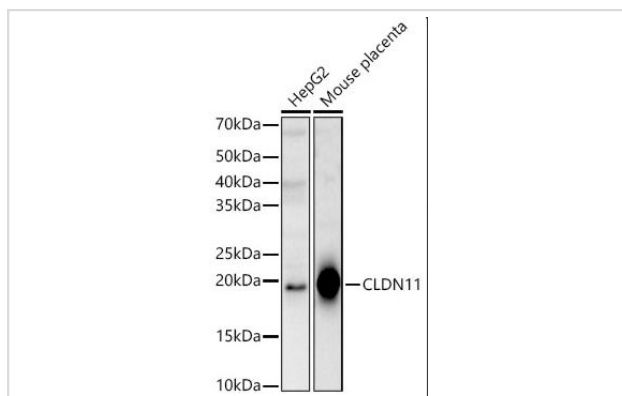
Description

Product Name	CLDN11 Antibody
Host Species	Rabbit
Clonality	Polyclonal
Isotype	IgG
Purification	Affinity purification
Applications	WB
Species Reactivity	Human, Mouse
Specificity	The antibody detects endogenous level of total CLDN11 protein.
Immunogen Type	Recombinant Protein
Immunogen Description	Recombinant fusion protein of human CLDN11 (NP_005593.2).
Target Name	CLDN11
Other Names	CLDN11;OSP;OTM
Accession No.	Uniprot:O75508GeneID:5010
Uniprot	O75508
GeneID	5010
SDS-PAGE MW	22kDa
Concentration	0.94 mg/ml
Formulation	PBS with 0.05% proclin300,50% glycerol,pH7.3.
Storage	Store at -20°C. Avoid freeze / thaw cycles.

Application Details

WB □ 1:500 - 1:2000

Images



Western blot analysis of various lysates, using CLDN11 antibody at 1:1000 dilution.

Background

This gene encodes a member of the claudin family. Claudins are integral membrane proteins and components of tight junction strands. Tight junction strands serve as a physical barrier to prevent solutes and water from passing freely through the paracellular space between epithelial or endothelial cell sheets, and also play critical roles in maintaining cell polarity and signal transductions. The protein encoded by this gene is a major component of central nervous system (CNS) myelin and plays an important role in regulating proliferation and migration of oligodendrocytes. Mouse studies showed that the gene deficiency results in deafness and loss of the Sertoli cell epithelial phenotype in the testis. This protein is a tight junction protein at the human blood-testis barrier (BTB), and the BTB disruption is related to a dysfunction of this gene. Alternatively spliced transcript variants encoding different isoforms have been identified.

Note: This product is for in vitro research use only