

## CCL28 Antibody

Catalog No: #32743

Package Size: #32743-1 50ul #32743-2 100ul

Orders: [order@signalwayantibody.com](mailto:order@signalwayantibody.com)Support: [tech@signalwayantibody.com](mailto:tech@signalwayantibody.com)

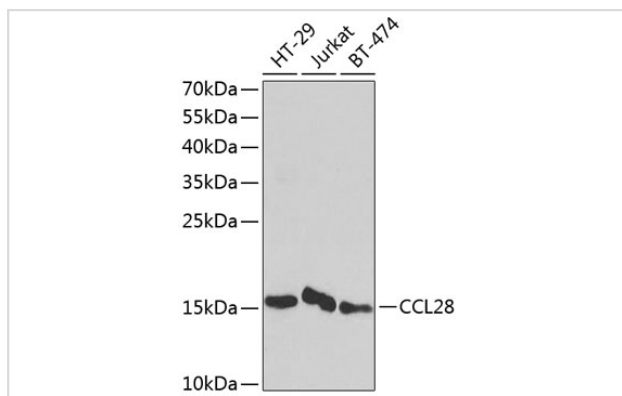
## Description

Product Name	CCL28 Antibody
Host Species	Rabbit
Clonality	Polyclonal
Isotype	IgG
Purification	Affinity purification
Applications	WB
Species Reactivity	Human,Mouse
Specificity	The antibody detects endogenous level of total CCL28 protein.
Immunogen Type	Recombinant Protein
Immunogen Description	Recombinant fusion protein of human CCL28 (NP_683513.1).
Target Name	CCL28
Other Names	CCL28;CCK1;MEC;SCYA28
Accession No.	Uniprot:Q9NRJ3GeneID:56477
Uniprot	Q9NRJ3
GeneID	56477
SDS-PAGE MW	14kDa
Concentration	1.0mg/ml
Formulation	PBS with 0.02% sodium azide,50% glycerol,pH7.3.
Storage	Store at -20°C. Avoid freeze / thaw cycles.

## Application Details

WB □ 1:500 - 1:2000

## Images



Western blot analysis of extracts of various cell lines, using CCL28 antibody.

## Background

---

This antimicrobial gene belongs to the subfamily of small cytokine CC genes. Cytokines are a family of secreted proteins involved in immunoregulatory and inflammatory processes. The CC cytokines are proteins characterized by two adjacent cysteines. The cytokine encoded by this gene displays chemotactic activity for resting CD4 or CD8 T cells and eosinophils. The product of this gene binds to chemokine receptors CCR3 and CCR10. This chemokine may play a role in the physiology of extracutaneous epithelial tissues, including diverse mucosal organs. Multiple transcript variants encoding two different isoforms have been found for this gene.

---

Note: This product is for in vitro research use only