

ATG4A Antibody

Catalog No: #32744

Package Size: #32744-1 50ul #32744-2 100ul

Orders: order@signalwayantibody.comSupport: tech@signalwayantibody.com

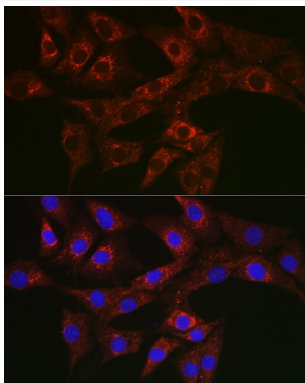
Description

Product Name	ATG4A Antibody
Host Species	Rabbit
Clonality	Polyclonal
Isotype	IgG
Purification	Affinity purification
Applications	WB,IF
Species Reactivity	Human,Mouse,Rat
Specificity	The antibody detects endogenous level of total ATG4A protein.
Immunogen Type	Recombinant Protein
Immunogen Description	Recombinant fusion protein of human ATG4A (NP_443168.2).
Target Name	ATG4A
Other Names	ATG4A;APG4A;AUTL2
Accession No.	Uniprot:Q8WYN0GenelD:115201
Uniprot	Q8WYN0
GenelD	115201
SDS-PAGE MW	48KDa
Concentration	1.0mg/ml
Formulation	PBS with 0.02% sodium azide,50% glycerol,pH7.3.
Storage	Store at -20°C. Avoid freeze / thaw cycles.

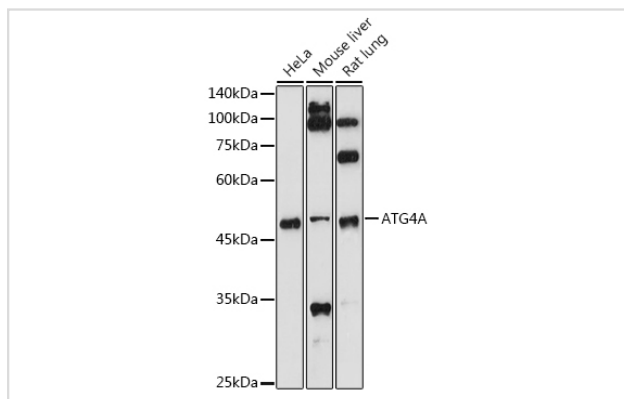
Application Details

WB \square 1:500 - 1:2000 IF \square 1:50 - 1:200

Images



Immunofluorescence analysis of NIH/3T3 cells using ATG4A Rabbit pAb.



Western blot analysis of extracts of various cell lines, using ATG4A antibody.

Background

Autophagy is the process by which endogenous proteins and damaged organelles are destroyed intracellularly. Autophagy is postulated to be essential for cell homeostasis and cell remodeling during differentiation, metamorphosis, non-apoptotic cell death, and aging. Reduced levels of autophagy have been described in some malignant tumors, and a role for autophagy in controlling the unregulated cell growth linked to cancer has been proposed. This gene encodes a member of the autophagin protein family. The encoded protein is also designated as a member of the C-54 family of cysteine proteases.

Note: This product is for in vitro research use only