

EIF4A1 Rabbit mAb

Catalog No: #32748

Package Size: #32748-1 50ul #32748-2 100ul

Orders: order@signalwayantibody.comSupport: tech@signalwayantibody.com

Description

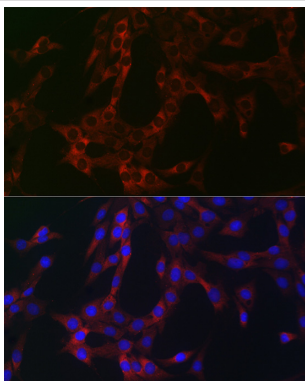
Product Name	EIF4A1 Rabbit mAb
Host Species	Rabbit
Clonality	Monoclonal
Isotype	IgG
Purification	Affinity-chromatography
Applications	WB;ICC/IF
Species Reactivity	Human,Mouse,Rat
Specificity	The antibody detects endogenous level of total EIF4A1 protein.
Immunogen Type	Recombinant Protein
Immunogen Description	A synthesized peptide derived from human eIF4A1
Target Name	EIF4A1
Other Names	EIF4A1;DDX2A;EIF-4A;EIF4A;eIF-4A-I;eIF4A-I
Accession No.	Uniprot:P60842GeneID:1973
Uniprot	P60842
GeneID	1973
SDS-PAGE MW	45KDa
Concentration	0.4mg/ml
Formulation	Rabbit IgG in 10mM phosphate buffered saline , pH 7.4, 150mM sodium chloride, 0.05% BSA, 0.02% sodium azide and 50% glycerol.
Storage	Store at +4°C for short term. Store at -20°C for long term. Avoid freeze/thaw cycle.

Application Details

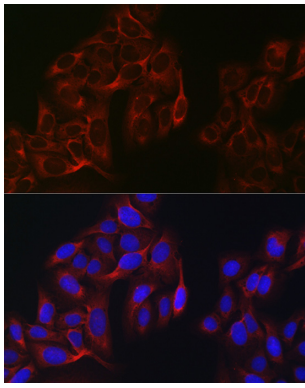
WB 1:1000-1:2000;

ICC/IF 1:50-1:200

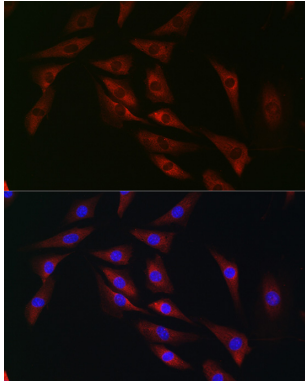
Images



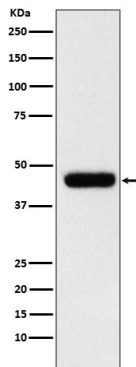
Immunofluorescence analysis of C6 cells using eIF4A1 Rabbit pAb.



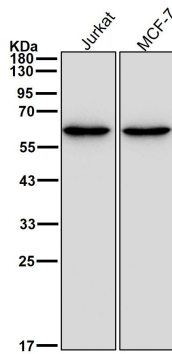
Immunofluorescence analysis of U2OS cells using eIF4A1 Rabbit pAb.



Immunofluorescence analysis of NIH/3T3 cells using eIF4A1 Rabbit pAb.



Western blot analysis of eIF4A1 expression in MCF7 cell lysate.



All lanes use the Antibody at 1:1K dilution for 1 hour at room temperature.

Background

ATP-dependent RNA helicase which is a subunit of the eIF4F complex involved in cap recognition and is required for mRNA binding to ribosome. In the current model of translation initiation, eIF4A unwinds RNA secondary structures in the 5'-UTR of mRNAs which is necessary to allow efficient binding of the small ribosomal subunit, and subsequent scanning for the initiator codon.

Note: This product is for in vitro research use only