

## IGF-1R(Ab-1346) Antibody

Catalog No: #21303

Package Size: #21303-1 50ul #21303-2 100ul

Orders: order@signalwayantibody.com

Support: tech@signalwayantibody.com

## Description

Product Name	IGF-1R(Ab-1346) Antibody
Host Species	Rabbit
Clonality	Polyclonal
Purification	Antibodies were produced by immunizing rabbits with synthetic peptide and KLH conjugates. Antibodies were purified by affinity-chromatography using epitope-specific peptide.
Applications	WB IHC
Species Reactivity	Hu Ms Rt
Specificity	The antibody detects endogenous level of total IGF-1R protein.
Immunogen Type	Peptide-KLH
Immunogen Description	Peptide sequence around aa.1344~1348 (Q-P-Y-A-H) derived from Human IGF-1R .
Target Name	IGF-1R
Other Names	Insulin-like growth factor I receptor; CD221; IGF1R; kinase IGF1R;
Accession No.	Swiss-Prot: P08069NCBI Protein: NP_000866.1
Uniprot	P08069
GeneID	3480;
Concentration	1.0mg/ml
Formulation	Supplied at 1.0mg/mL in phosphate buffered saline (without Mg <sup>2+</sup> and Ca <sup>2+</sup> ), pH 7.4, 150mM NaCl, 0.02% sodium azide and 50% glycerol.
Storage	Store at -20°C for long term preservation (recommended). Store at 4°C for short term use.

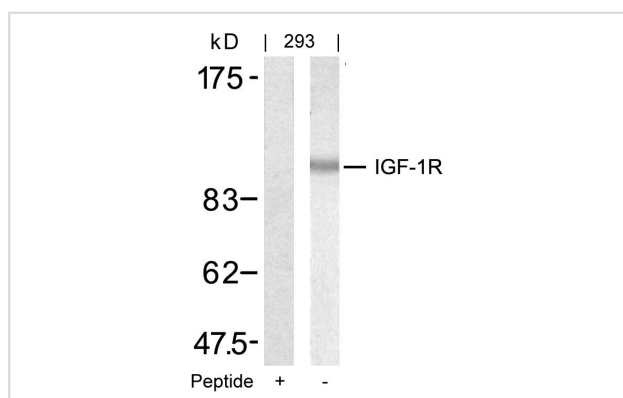
## Application Details

Predicted MW: 200 95 kd

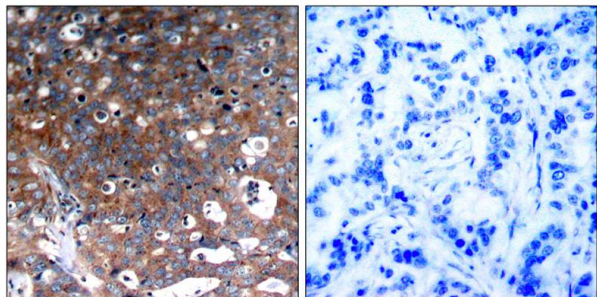
Western blotting: 1:500~1:1000

Immunohistochemistry: 1:50~1:100

## Images



Western blot analysis of extracts from 293 cells using IGF-1R(Ab-1346) Antibody #21303 and the same antibody preincubated with blocking peptide.



Immunohistochemical analysis of paraffin-embedded human breast carcinoma tissue using IGF-1R(Ab-1346) Antibody #21303(left) or the same antibody preincubated with blocking peptide(right).

## Background

This receptor binds insulin-like growth factor 1 (IGF1) with a high affinity and IGF2 with a lower affinity. It has a tyrosine-protein kinase activity, which is necessary for the activation of the IGF1-stimulated downstream signaling cascade. When present in a hybrid receptor with INSR, binds IGF1.

Adams, T.E. et al. (2000) Cell. Mol. Life Sci. 57, 1050-1093

Baserga, R. et al. (2000) Oncogene 19, 5574-5581

Scheidegger, K.J. et al. (2000) J. Biol. Chem. 275, 38921-38928.

O'Connor R, et al. Mol Cell Biol 1997 Jan; 17(1): 427-35

Note: This product is for in vitro research use only