

## AIMP1 Antibody

Catalog No: #32755

Package Size: #32755-1 50ul #32755-2 100ul

Orders: [order@signalwayantibody.com](mailto:order@signalwayantibody.com)Support: [tech@signalwayantibody.com](mailto:tech@signalwayantibody.com)

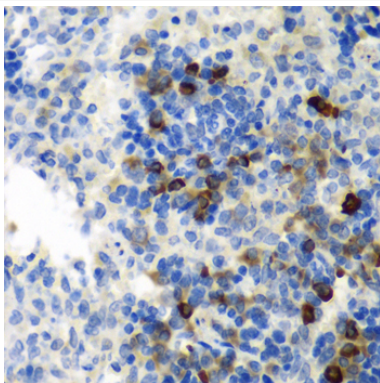
## Description

|                       |   |
|-----------------------|---|
| Product Name          | AIMP1 Antibody  |
| Host Species          | Rabbit  |
| Clonality             | Polyclonal  |
| Isotype               | IgG   |
| Purification          | Affinity purification   |
| Applications          | WB,IHC  |
| Species Reactivity    | Human,Mouse,Rat   |
| Specificity           | The antibody detects endogenous level of total AIMP1 protein. |
| Immunogen Type        | Recombinant Protein   |
| Immunogen Description | Recombinant fusion protein of human AIMP1 (NP_001135888.1).   |
| Target Name           | AIMP1   |
| Other Names           | AIMP1;EMAP2;EMAPII;HLD3;SCYE1;p43                             |
| Accession No.         | Uniprot:Q12904GeneID:9255                                     |
| Uniprot               | Q12904  |
| GeneID                | 9255  |
| SDS-PAGE MW           | 37kDa   |
| Concentration         | 1.0mg/ml  |
| Formulation           | PBS with 0.02% sodium azide,50% glycerol,pH7.3.               |
| Storage               | Store at -20°C. Avoid freeze / thaw cycles.                   |

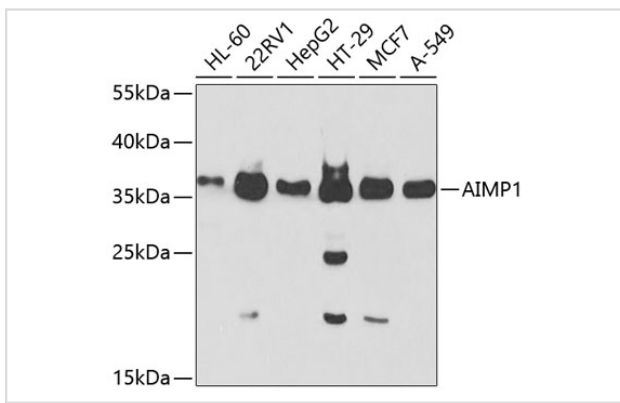
## Application Details

WB □ 1:500 - 1:2000 IHC □ 1:50 - 1:200

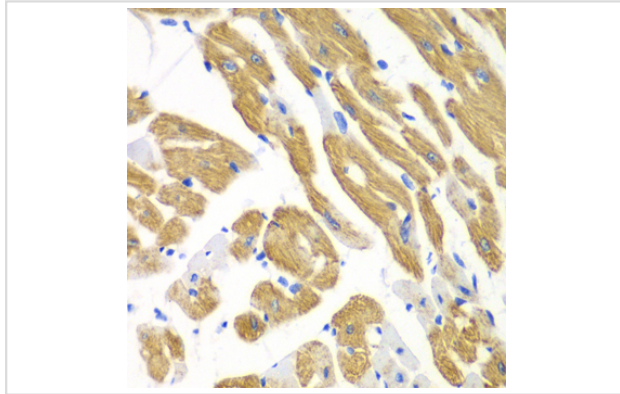
## Images



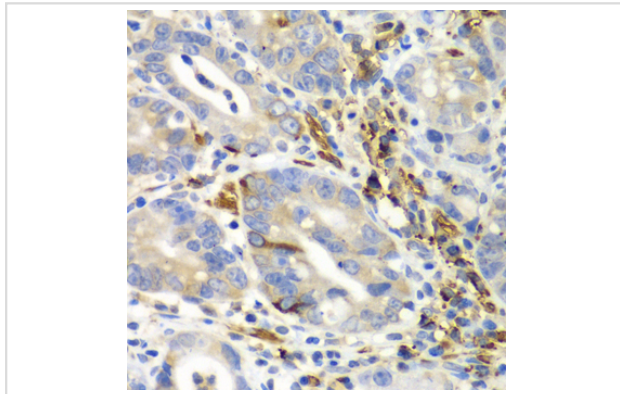
Immunohistochemistry of paraffin-embedded rat spleen using AIMP1 antibody.



Western blot analysis of extracts of various cell lines, using AIMP1 Antibody.



Immunohistochemistry of paraffin-embedded mouse heart using AIMP1 antibody.



Immunohistochemistry of paraffin-embedded human gastric cancer using AIMP1 antibody.

## Background

The protein encoded by this gene is a cytokine that is specifically induced by apoptosis, and it is involved in the control of angiogenesis, inflammation, and wound healing. The release of this cytokine renders the tumor-associated vasculature sensitive to tumor necrosis factor. The precursor protein is identical to the p43 subunit, which is associated with the multi-tRNA synthetase complex, and it modulates aminoacylation activity of tRNA synthetase in normal cells. This protein is also involved in the stimulation of inflammatory responses after proteolytic cleavage in tumor cells. Multiple transcript variants encoding different isoforms have been found for this gene. A pseudogene has been identified on chromosome 20.

Note: This product is for in vitro research use only