

ATL1 Antibody

Catalog No: #32756

Package Size: #32756-1 50ul #32756-2 100ul

Orders: order@signalwayantibody.com

Support: tech@signalwayantibody.com

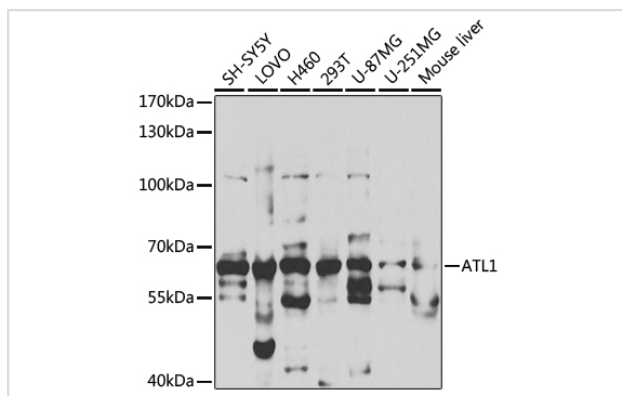
Description

Product Name	ATL1 Antibody
Host Species	Rabbit
Clonality	Polyclonal
Isotype	IgG
Purification	Affinity purification
Applications	WB,IF
Species Reactivity	Human,Mouse
Specificity	The antibody detects endogenous level of total ATL1 protein.
Immunogen Type	Recombinant Protein
Immunogen Description	Recombinant fusion protein of human ATL1 (NP_056999.2).
Target Name	ATL1
Other Names	ATL1;AD-FSP;FSP1;GBP3;HSN1D;SPG3;SPG3A;atlastin1
Accession No.	Uniprot:Q8WXF7GenelD:51062
Uniprot	Q8WXF7
GenelD	51062
SDS-PAGE MW	64kDa
Concentration	1.0mg/ml
Formulation	PBS with 0.02% sodium azide,50% glycerol,pH7.3.
Storage	Store at -20°C. Avoid freeze / thaw cycles.

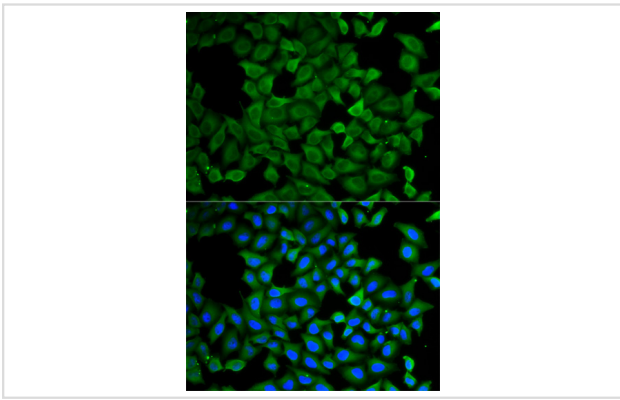
Application Details

WB □ 1:500 - 1:2000 IF □ 1:50 - 1:200

Images



Western blot analysis of extracts of various cell lines, using ATL1 antibody.



Immunofluorescence analysis of A549 cells using ATL1 antibody.

Background

The protein encoded by this gene is a GTPase and a Golgi body transmembrane protein. The encoded protein can form a homotetramer and has been shown to interact with spastin and with mitogen-activated protein kinase kinase kinase 4. This protein may be involved in axonal maintenance as evidenced by the fact that defects in this gene are a cause of spastic paraplegia type 3. Three transcript variants encoding two different isoforms have been found for this gene.

Note: This product is for in vitro research use only