

CPT1A Antibody

Catalog No: #32761



Package Size: #32761-1 50ul #32761-2 100ul

Orders: [order@signalwayantibody.com](mailto:order@signalwayantibody.com)  
Support: [tech@signalwayantibody.com](mailto:tech@signalwayantibody.com)

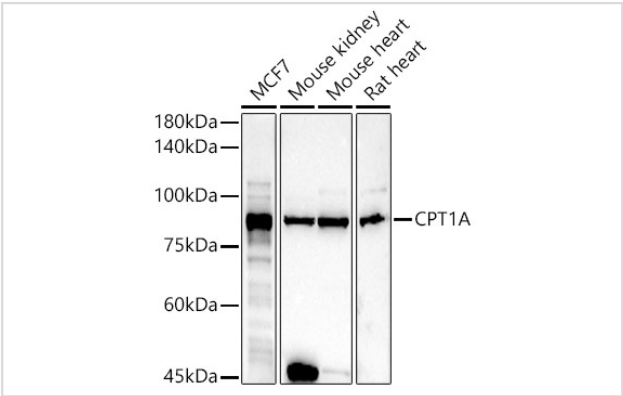
Description

Product Name	CPT1A Antibody
Host Species	Rabbit
Clonality	Polyclonal
Isotype	IgG
Purification	Affinity purification
Applications	WB,IF
Species Reactivity	Human,Mouse,Rat
Specificity	The antibody detects endogenous level of total CPT1A protein.
Immunogen Type	Recombinant Protein
Immunogen Description	Recombinant fusion protein of human CPT1A (NP_001027017.1).
Target Name	CPT1A
Other Names	CPT1A;CPT1;CPT1-L;L-CPT1
Accession No.	Uniprot:P50416GenelD:1374
Uniprot	P50416
GenelD	1374
SDS-PAGE MW	88KDa
Concentration	1.0mg/ml
Formulation	PBS with 0.02% sodium azide,50% glycerol,pH7.3.
Storage	Store at -20°C. Avoid freeze / thaw cycles.

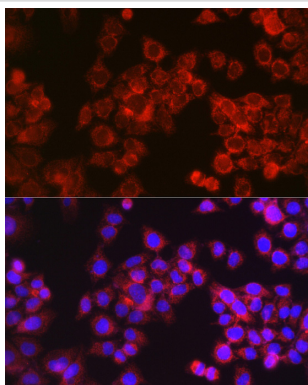
Application Details

WB 1:500 - 1:2000IF 1:50 - 1:200

Images



Western blot analysis of extracts of various cell lines, using CPT1A antibody.



Immunofluorescence analysis of HeLa cells using CPT1A Rabbit pAb.

## Background

The mitochondrial oxidation of long-chain fatty acids is initiated by the sequential action of carnitine palmitoyltransferase I (which is located in the outer membrane and is detergent-labile) and carnitine palmitoyltransferase II (which is located in the inner membrane and is detergent-stable), together with a carnitine-acylcarnitine translocase. CPT I is the key enzyme in the carnitine-dependent transport across the mitochondrial inner membrane and its deficiency results in a decreased rate of fatty acid beta-oxidation. Alternatively spliced transcript variants encoding different isoforms have been found for this gene.

Note: This product is for in vitro research use only