

## CUL2 Antibody

Catalog No: #32762

Package Size: #32762-1 50ul #32762-2 100ul

Orders: order@signalwayantibody.com

Support: tech@signalwayantibody.com

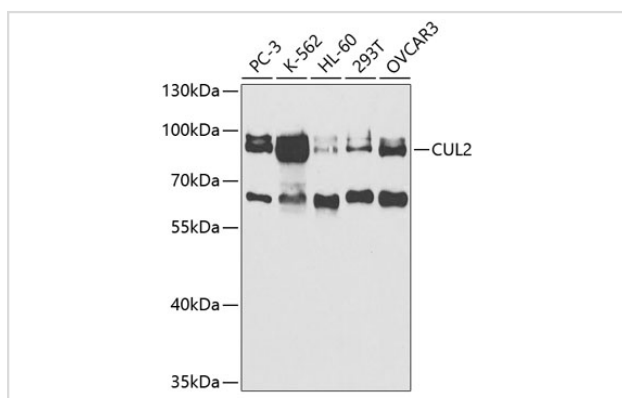
## Description

Product Name	CUL2 Antibody
Host Species	Rabbit
Clonality	Polyclonal
Purification	Antibodies were purified by affinity purification using immunogen.
Applications	WB,IF
Species Reactivity	Human
Specificity	The antibody detects endogenous level of total CUL2 protein.
Immunogen Type	Recombinant Protein
Immunogen Description	Recombinant protein of human CUL2.
Target Name	CUL2
Other Names	Cullin-2;
Accession No.	Swiss-Prot:Q13617NCBI Gene ID:8453
Uniprot	Q13617
GeneID	8453;
SDS-PAGE MW	87KD
Concentration	1.0mg/ml
Formulation	Supplied at 1.0mg/mL in phosphate buffered saline (without Mg <sup>2+</sup> and Ca <sup>2+</sup> ), pH 7.4, 150mM NaCl, 0.02% sodium azide and 50% glycerol.
Storage	Store at -20°C

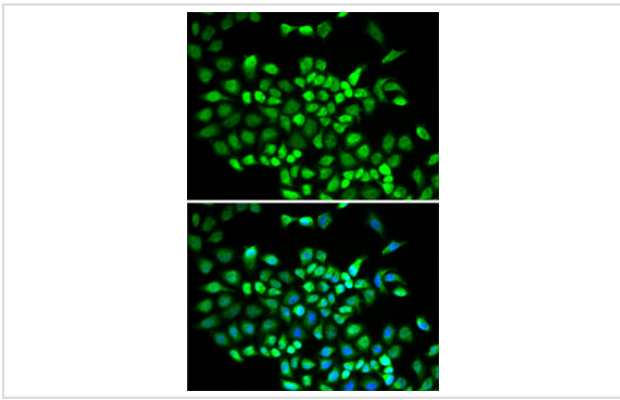
## Application Details

WB □ 1:500 - 1:2000 IF □ 1:50 - 1:200

## Images



Western blot analysis of extracts of various cell lines, using CUL2 at 1:1000 dilution.



Immunofluorescence analysis of A-549 cells using CUL2 .  
Blue: DAPI for nuclear staining.

## Background

CUL2 is a core component of multiple cullin-RING-based ECS (ElonginB/C-CUL2/5-SOCS-box protein) E3 ubiquitin-protein ligase complexes, which mediate the ubiquitination of target proteins. It serves as a rigid scaffold in the complex and may contribute to catalysis through positioning of the substrate and the ubiquitin-conjugating enzyme.

Note: This product is for in vitro research use only