

GCLM Antibody

Catalog No: #32765

Package Size: #32765-1 50ul #32765-2 100ul

Orders: order@signalwayantibody.com

Support: tech@signalwayantibody.com

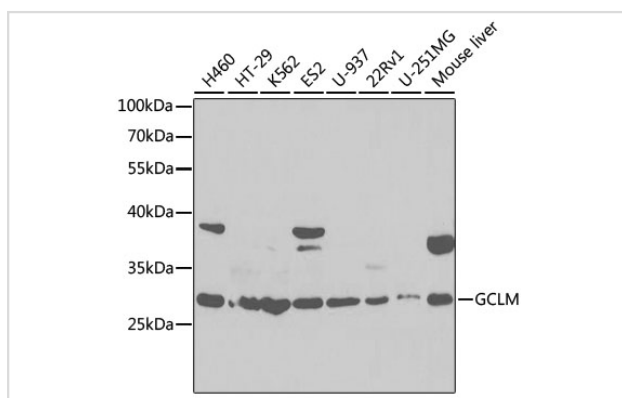
Description

Product Name	GCLM Antibody
Host Species	Rabbit
Clonality	Polyclonal
Isotype	IgG
Purification	Affinity purification
Applications	WB
Species Reactivity	Human,Mouse
Specificity	The antibody detects endogenous level of total GCLM protein.
Immunogen Type	Recombinant Protein
Immunogen Description	Recombinant fusion protein of human GCLM (NP_002052.1).
Target Name	GCLM
Other Names	GCLM;GLCLR
Accession No.	Uniprot:P48507GenelD:2730
Uniprot	P48507
GenelD	2730
SDS-PAGE MW	31kDa
Concentration	1.0mg/ml
Formulation	PBS with 0.02% sodium azide,50% glycerol,pH7.3.
Storage	Store at -20°C. Avoid freeze / thaw cycles.

Application Details

WB □ 1:500 - 1:2000

Images



Western blot analysis of extracts of various cell lines, using GCLM antibody.

Background

Glutamate-cysteine ligase, also known as gamma-glutamylcysteine synthetase, is the first rate limiting enzyme of glutathione synthesis. The enzyme consists of two subunits, a heavy catalytic subunit and a light regulatory subunit. Gamma glutamylcysteine synthetase deficiency has been implicated in some forms of hemolytic anemia. Alternative splicing results in multiple transcript variants encoding different isoforms.

Note: This product is for in vitro research use only