

SGCE Antibody

Catalog No: #32776

Package Size: #32776-1 50ul #32776-2 100ul

Orders: order@signalwayantibody.com

Support: tech@signalwayantibody.com

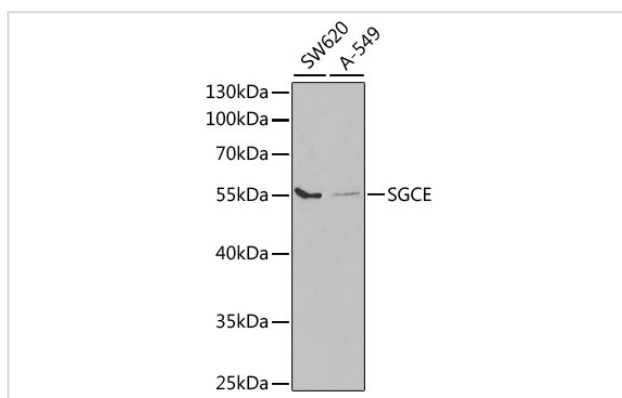
Description

Product Name	SGCE Antibody
Host Species	Rabbit
Clonality	Polyclonal
Isotype	IgG
Purification	Affinity purification
Applications	WB
Species Reactivity	Human,Mouse
Specificity	The antibody detects endogenous level of total SGCE protein.
Immunogen Type	Recombinant Protein
Immunogen Description	Recombinant fusion protein of human SGCE (NP_003910.1).
Target Name	SGCE
Other Names	SGCE;DYT11;ESG;epsilon-SG
Accession No.	Uniprot:O43556GeneID:8910
Uniprot	O43556
GeneID	8910
SDS-PAGE MW	55kDa
Concentration	1.0mg/ml
Formulation	PBS with 0.02% sodium azide,50% glycerol,pH7.3.
Storage	Store at -20°C. Avoid freeze / thaw cycles.

Application Details

WB □ 1:500 - 1:2000

Images



Western blot analysis of extracts of various cell lines, using SGCE antibody.

Background

This gene encodes the epsilon member of the sarcoglycan family. Sarcoglycans are transmembrane proteins that are components of the dystrophin-glycoprotein complex, which link the actin cytoskeleton to the extracellular matrix. Unlike other family members which are predominantly expressed in striated muscle, the epsilon sarcoglycan is more broadly expressed. Mutations in this gene are associated with myoclonus-dystonia syndrome. This gene is imprinted, with preferential expression from the paternal allele. Alternatively spliced transcript variants encoding different isoforms have been found for this gene. A pseudogene associated with this gene is located on chromosome 2.

Note: This product is for in vitro research use only