

SLC4A4 Antibody

Catalog No: #32777

Package Size: #32777-1 50ul #32777-2 100ul

Orders: order@signalwayantibody.com

Support: tech@signalwayantibody.com

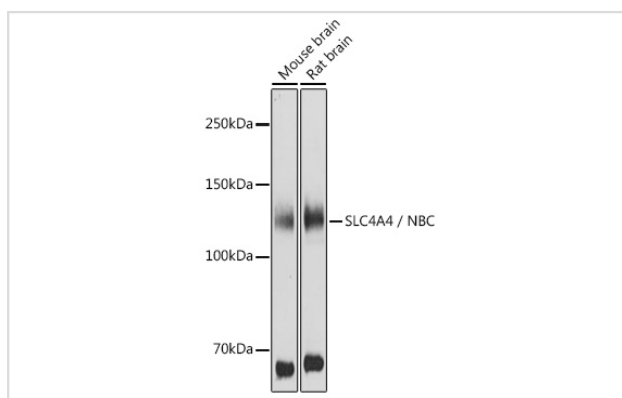
Description

Product Name	SLC4A4 Antibody
Host Species	Rabbit
Clonality	Polyclonal
Isotype	IgG
Purification	Affinity purification
Applications	WB,IF
Species Reactivity	Human,Mouse,Rat
Specificity	The antibody detects endogenous level of total SLC4A4 protein.
Immunogen Type	Recombinant Protein
Immunogen Description	Recombinant fusion protein of human SLC4A4 / NBC (NP_003750.1).
Target Name	SLC4A4
Other Names	SLC4A4;HNBC1;KNBC;NBC1;NBC2;NBCe1-A;SLC4A5;hhNMC;kNBC1;pNBC
Accession No.	Uniprot:Q9Y6R1GeneID:8671
Uniprot	Q9Y6R1
GeneID	8671
SDS-PAGE MW	135KDa
Concentration	1.0mg/ml
Formulation	PBS with 0.02% sodium azide,50% glycerol,pH7.3.
Storage	Store at -20°C. Avoid freeze / thaw cycles.

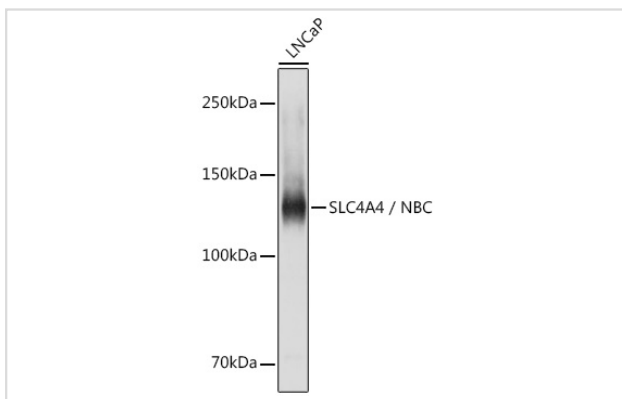
Application Details

WB □ 1:500 - 1:2000 IF □ 1:50 - 1:200

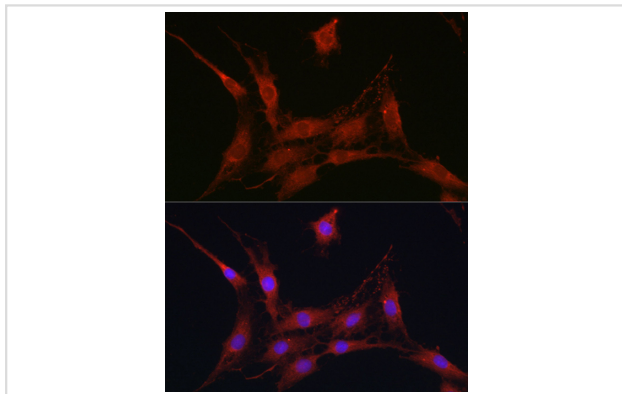
Images



Western blot analysis of extracts of various cell lines, using SLC4A4 / NBC antibody.



Western blot analysis of extracts of LNCaP cells, using SLC4A4 / NBC antibody.



Immunofluorescence analysis of C6 cells using SLC4A4 / NBC Rabbit pAb.

Background

This gene encodes a sodium bicarbonate cotransporter (NBC) involved in the regulation of bicarbonate secretion and absorption and intracellular pH. Mutations in this gene are associated with proximal renal tubular acidosis. Multiple transcript variants encoding different isoforms have been found for this gene.

Note: This product is for in vitro research use only