

BPI Antibody

Catalog No: #32782

Package Size: #32782-1 50ul #32782-2 100ul

Orders: order@signalwayantibody.com

Support: tech@signalwayantibody.com

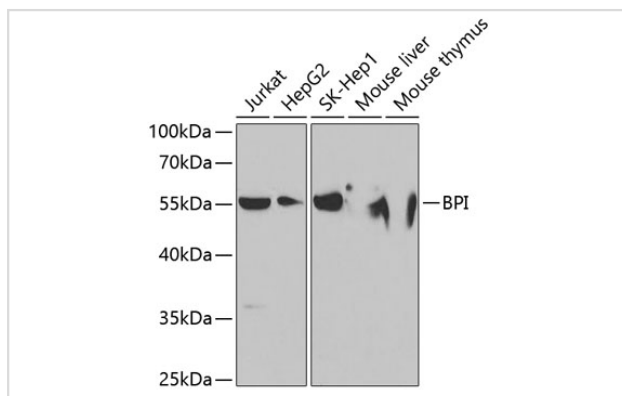
Description

Product Name	BPI Antibody
Host Species	Rabbit
Clonality	Polyclonal
Isotype	IgG
Purification	Affinity purification
Applications	WB
Species Reactivity	Human,Mouse
Specificity	The antibody detects endogenous level of total BPI protein.
Immunogen Type	Recombinant Protein
Immunogen Description	Recombinant fusion protein of human BPI (NP_001716.2).
Target Name	BPI
Other Names	BPI;BPIFD1;rBPI
Accession No.	Uniprot:P17213GenelD:671
Uniprot	P17213
GenelD	671
SDS-PAGE MW	55kDa
Concentration	1.0mg/ml
Formulation	PBS with 0.02% sodium azide,50% glycerol,pH7.3.
Storage	Store at -20°C. Avoid freeze / thaw cycles.

Application Details

WB □ 1:500 - 1:2000

Images



Western blot analysis of extracts of various cell lines, using BPI antibody.

Background

This gene encodes a lipopolysaccharide binding protein. It is associated with human neutrophil granules and has antimicrobial activity against gram-negative organisms.

Note: This product is for in vitro research use only