

GOLGA2 Antibody

Catalog No: #32785

Package Size: #32785-1 50ul #32785-2 100ul

Orders: order@signalwayantibody.comSupport: tech@signalwayantibody.com

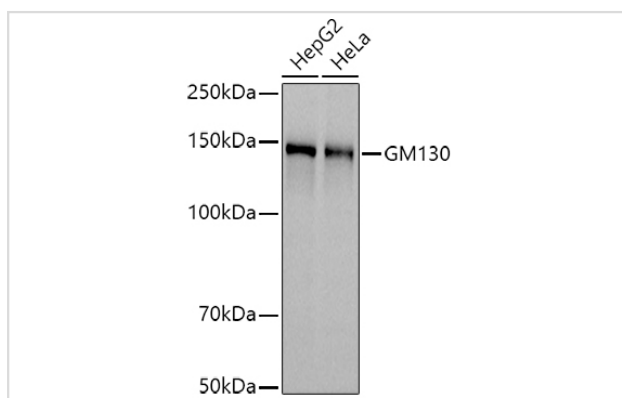
Description

Product Name	GOLGA2 Antibody
Host Species	Rabbit
Clonality	Polyclonal
Isotype	IgG
Purification	Affinity purification
Applications	WB,IHC,IF
Species Reactivity	Human,Mouse,Rat
Specificity	The antibody detects endogenous level of total GOLGA2 protein.
Immunogen Type	Recombinant Protein
Immunogen Description	Recombinant fusion protein of human GM130 (NP_004477.3).
Target Name	GOLGA2
Other Names	GOLGA2;GM130;golgin A2
Accession No.	Uniprot:Q08379GeneID:2801
Uniprot	Q08379
GeneID	2801
SDS-PAGE MW	130KDa
Concentration	1.0mg/ml
Formulation	PBS with 0.02% sodium azide,50% glycerol,pH7.3.
Storage	Store at -20°C. Avoid freeze / thaw cycles.

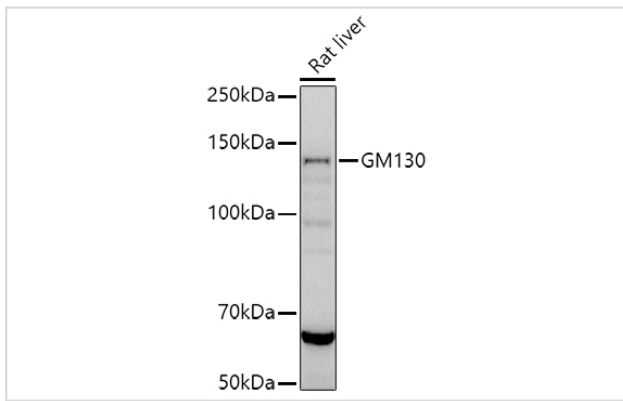
Application Details

WB 1:500 - 1:2000 IHC 1:50 - 1:200 IF 1:50 - 1:200

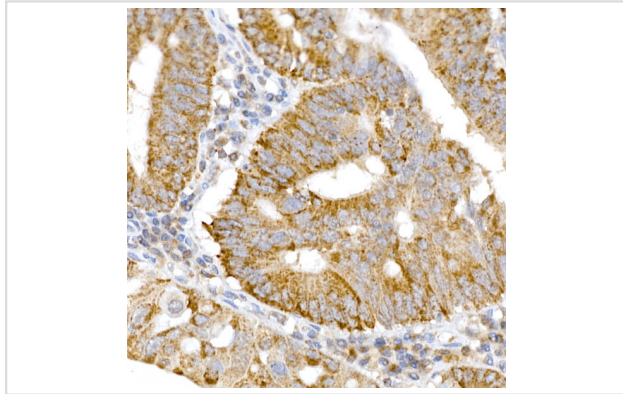
Images



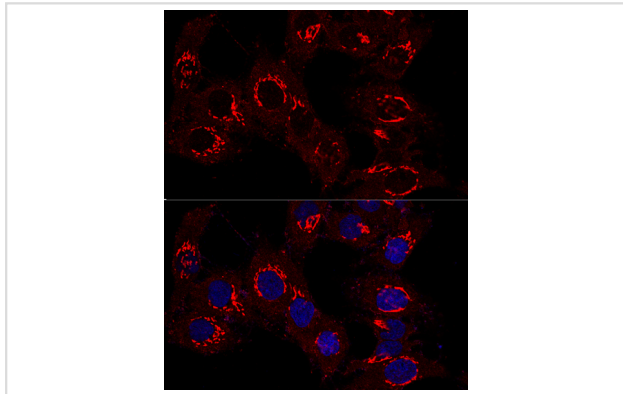
Western blot analysis of extracts of various cell lines, using .



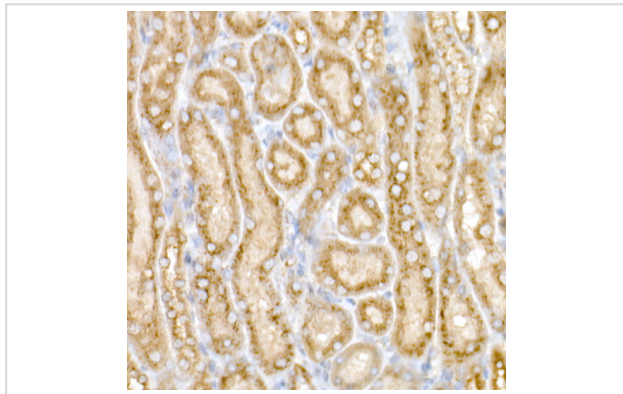
Western blot analysis of extracts of Rat liver, using .



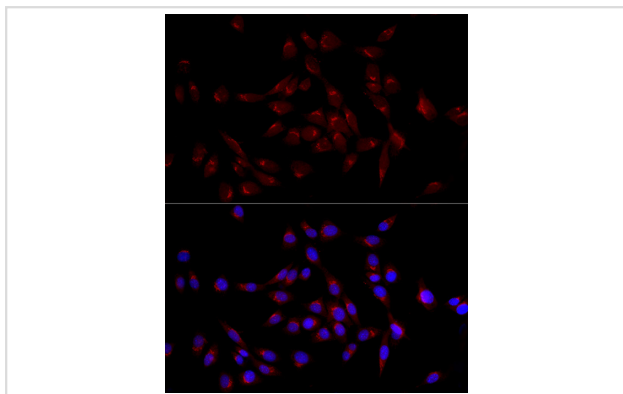
Immunohistochemistry of paraffin-embedded human colon carcinoma using GM130 antibody.



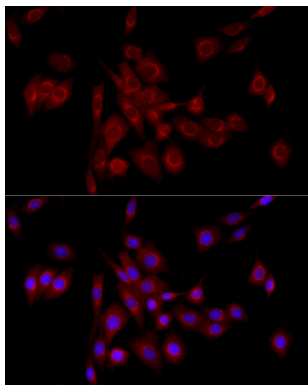
Confocal immunofluorescence analysis of HeLa cells using GM130 antibody.



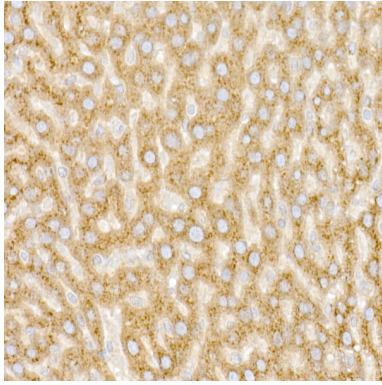
Immunohistochemistry of paraffin-embedded Mouse kidney using GM130 antibody.



Immunofluorescence analysis of NIH/3T3 cells using GM130 Rabbit pAb.



Immunofluorescence analysis of PC-12 cells using GM130 Rabbit pAb.



Immunohistochemistry of paraffin-embedded Rat liver using GM130 antibody.

Background

The Golgi apparatus, which participates in glycosylation and transport of proteins and lipids in the secretory pathway, consists of a series of stacked cisternae (flattened membrane sacs). Interactions between the Golgi and microtubules are thought to be important for the reorganization of the Golgi after it fragments during mitosis. This gene encodes one of the golgins, a family of proteins localized to the Golgi. This encoded protein has been postulated to play roles in the stacking of Golgi cisternae and in vesicular transport. Several alternatively spliced transcript variants of this gene have been described, but the full-length nature of these variants has not been determined.

Note: This product is for in vitro research use only