

## GTF2A1 Antibody

Catalog No: #32786

Package Size: #32786-1 50ul #32786-2 100ul

Orders: [order@signalwayantibody.com](mailto:order@signalwayantibody.com)Support: [tech@signalwayantibody.com](mailto:tech@signalwayantibody.com)

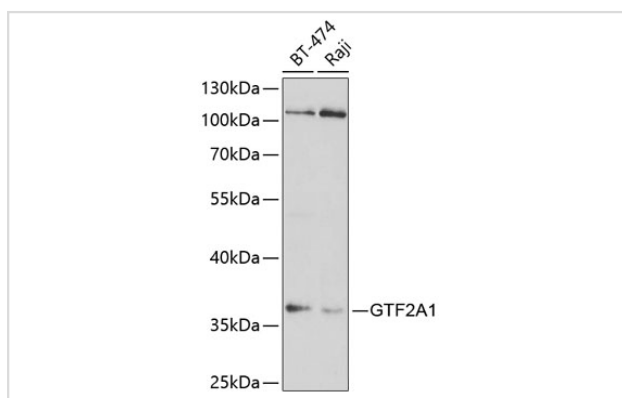
## Description

Product Name	GTF2A1 Antibody
Host Species	Rabbit
Clonality	Polyclonal
Isotype	IgG
Purification	Affinity purification
Applications	WB
Species Reactivity	Human
Specificity	The antibody detects endogenous level of total GTF2A1 protein.
Immunogen Type	Recombinant Protein
Immunogen Description	Recombinant fusion protein of human GTF2A1 (NP_056943.1).
Target Name	GTF2A1
Other Names	GTF2A1;TF2A1;TFIIA;TFIIA-42;TFIIAL
Accession No.	Uniprot:P52655GenelD:2957
Uniprot	P52655
GenelD	2957
SDS-PAGE MW	37kDa
Concentration	1.0mg/ml
Formulation	PBS with 0.02% sodium azide,50% glycerol,pH7.3.
Storage	Store at -20°C. Avoid freeze / thaw cycles.

## Application Details

WB □ 1:500 - 1:2000

## Images



Western blot analysis of extracts of various cell lines, using GTF2A1 antibody.

## Background

---

Accurate transcription initiation on TATA-containing class II genes involves the ordered assembly of RNA polymerase II (POLR2A; MIM 180660) and several general initiation factors (summarized by DeJong and Roeder, 1993 [PubMed 8224848]). One of these factors is TFIIA, which when purified from HeLa extracts consists of 35-, 19-, and 12-kD subunits.[supplied by OMIM, Jul 2010]

---

Note: This product is for in vitro research use only