

## SDCBP Antibody

Catalog No: #32800

Package Size: #32800-1 50ul #32800-2 100ul

Orders: [order@signalwayantibody.com](mailto:order@signalwayantibody.com)Support: [tech@signalwayantibody.com](mailto:tech@signalwayantibody.com)

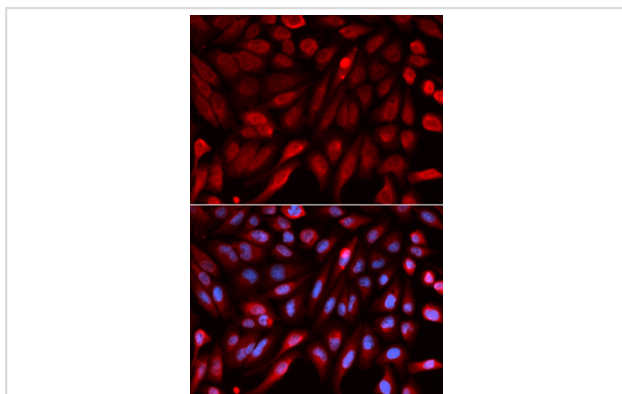
## Description

Product Name	SDCBP Antibody
Host Species	Rabbit
Clonality	Polyclonal
Purification	Antibodies were purified by affinity purification using immunogen.
Applications	WB,IF
Species Reactivity	Human
Specificity	The antibody detects endogenous level of total SDCBP protein.
Immunogen Type	Recombinant Protein
Immunogen Description	Recombinant protein of human SDCBP.
Target Name	SDCBP
Other Names	ST1; SYCL; MDA-9; TACIP18;
Accession No.	Swiss-Prot:O00560NCBI Gene ID:6386
Uniprot	O00560
GeneID	6386;
SDS-PAGE MW	32KD
Concentration	1.0mg/ml
Formulation	Supplied at 1.0mg/mL in phosphate buffered saline (without Mg <sup>2+</sup> and Ca <sup>2+</sup> ), pH 7.4, 150mM NaCl, 0.02% sodium azide and 50% glycerol.
Storage	Store at -20°C

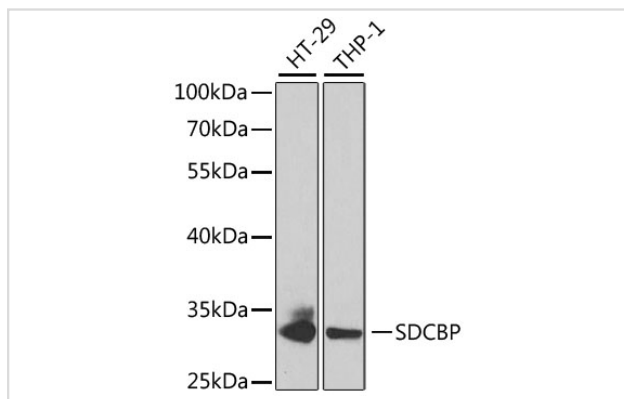
## Application Details

WB  $\square$  1:500 - 1:2000IF  $\square$  1:50 - 1:200

## Images



Immunofluorescence analysis of U2OS cells using SDCBP .  
Blue: DAPI for nuclear staining.



Western blot analysis of extracts of various cell lines, using SDCBP at 1:1000 dilution.

## Background

The protein encoded by this gene was initially identified as a molecule linking syndecan-mediated signaling to the cytoskeleton. The syntenin protein contains tandemly repeated PDZ domains that bind the cytoplasmic, C-terminal domains of a variety of transmembrane proteins. This protein may also affect cytoskeletal-membrane organization, cell adhesion, protein trafficking, and the activation of transcription factors. The protein is primarily localized to membrane-associated adherens junctions and focal adhesions but is also found at the endoplasmic reticulum and nucleus. Alternative splicing results in multiple transcript variants encoding different isoforms.

Note: This product is for in vitro research use only