

CALD1 Antibody

Catalog No: #32806

Package Size: #32806-1 50ul #32806-2 100ul

Orders: order@signalwayantibody.com

Support: tech@signalwayantibody.com

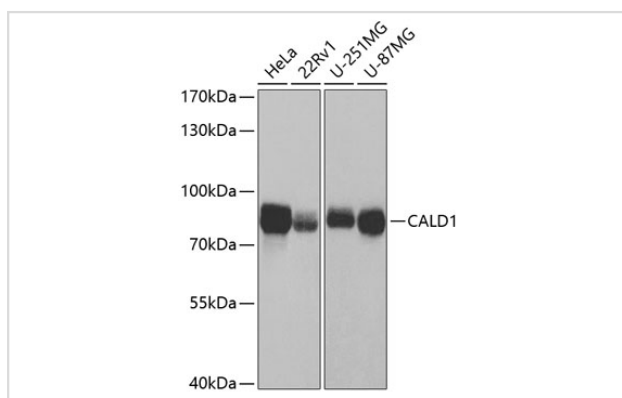
Description

Product Name	CALD1 Antibody
Host Species	Rabbit
Clonality	Polyclonal
Isotype	IgG
Purification	Affinity purification
Applications	WB
Species Reactivity	Human
Specificity	The antibody detects endogenous level of total CALD1 protein.
Immunogen Type	Recombinant Protein
Immunogen Description	Recombinant fusion protein of human CALD1 (NP_004333.1).
Target Name	CALD1
Other Names	CALD1;CDM;H-CAD;HCAD;L-CAD;LCAD;NAG22;caldesmon
Accession No.	Uniprot:Q05682GeneID:800
Uniprot	Q05682
GeneID	800
SDS-PAGE MW	85kDa
Concentration	1.0mg/ml
Formulation	PBS with 0.02% sodium azide,50% glycerol,pH7.3.
Storage	Store at -20°C. Avoid freeze / thaw cycles.

Application Details

WB □ 1:500 - 1:2000

Images



Western blot analysis of extracts of various cell lines, using CALD1 antibody.

Background

This gene encodes a calmodulin- and actin-binding protein that plays an essential role in the regulation of smooth muscle and nonmuscle contraction. The conserved domain of this protein possesses the binding activities to Ca(2+)-calmodulin, actin, tropomyosin, myosin, and phospholipids. This protein is a potent inhibitor of the actin-tropomyosin activated myosin MgATPase, and serves as a mediating factor for Ca(2+)-dependent inhibition of smooth muscle contraction. Alternative splicing of this gene results in multiple transcript variants encoding distinct isoforms.

Note: This product is for in vitro research use only