

CTSH Antibody

Catalog No: #32808

Package Size: #32808-1 50ul #32808-2 100ul

Orders: order@signalwayantibody.com

Support: tech@signalwayantibody.com

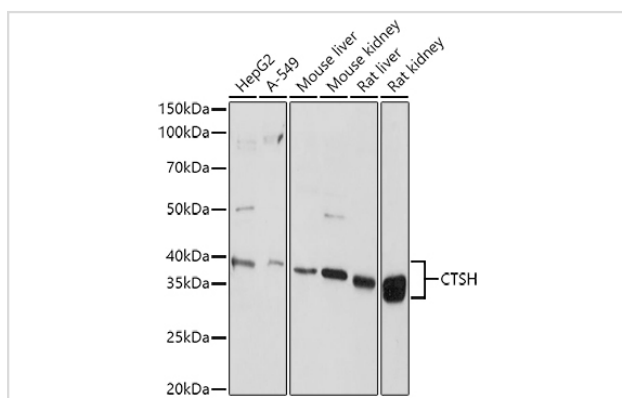
Description

Product Name	CTSH Antibody
Host Species	Rabbit
Clonality	Polyclonal
Isotype	IgG
Purification	Affinity purification
Applications	WB
Species Reactivity	Human,Mouse,Rat
Specificity	The antibody detects endogenous level of total CTSH protein.
Immunogen Type	Recombinant Protein
Immunogen Description	Recombinant fusion protein of human CTSH (NP_004381.2).
Target Name	CTSH
Other Names	CTSH;ACC-4;ACC-5;ACC4;ACC5;CPSB
Accession No.	Uniprot:P09668GeneID:1512
Uniprot	P09668
GeneID	1512
SDS-PAGE MW	41KDa
Concentration	1.0mg/ml
Formulation	PBS with 0.02% sodium azide,50% glycerol,pH7.3.
Storage	Store at -20°C. Avoid freeze / thaw cycles.

Application Details

WB □ 1:500 - 1:2000

Images



Western blot analysis of extracts of various cell lines, using CTSH antibody.

Background

The protein encoded by this gene is a lysosomal cysteine proteinase important in the overall degradation of lysosomal proteins. It is composed of a dimer of disulfide-linked heavy and light chains, both produced from a single protein precursor. The encoded protein, which belongs to the peptidase C1 protein family, can act both as an aminopeptidase and as an endopeptidase. Increased expression of this gene has been correlated with malignant progression of prostate tumors. Alternate splicing of this gene results in multiple transcript variants encoding different isoforms.

Note: This product is for in vitro research use only