

EED Antibody

Catalog No: #32811

Package Size: #32811-1 50ul #32811-2 100ul

Orders: order@signalwayantibody.com

Support: tech@signalwayantibody.com

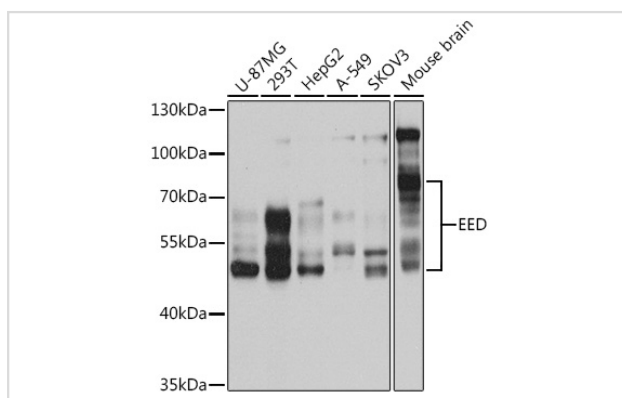
Description

Product Name	EED Antibody
Host Species	Rabbit
Clonality	Polyclonal
Purification	Antibodies were purified by affinity purification using immunogen.
Applications	WB
Species Reactivity	Human,Mouse,Rat
Specificity	The antibody detects endogenous level of total EED protein.
Immunogen Type	Peptide
Immunogen Description	A synthetic peptide of human EED.
Target Name	EED
Other Names	HEED; WAIT1;
Accession No.	Swiss-Prot:O75530NCBI Gene ID:8726
Uniprot	O75530
GeneID	8726;
SDS-PAGE MW	50KD
Concentration	1.0mg/ml
Formulation	Supplied at 1.0mg/mL in phosphate buffered saline (without Mg ²⁺ and Ca ²⁺), pH 7.4, 150mM NaCl, 0.02% sodium azide and 50% glycerol.
Storage	Store at -20°C

Application Details

WB □ 1:500 - 1:2000 IP □ 1:50 - 1:200

Images



Western blot analysis of extracts of various cell lines, using EED at 1:1000 dilution.

Background

This gene encodes a member of the Polycomb-group (PcG) family. PcG family members form multimeric protein complexes, which are involved in maintaining the transcriptional repressive state of genes over successive cell generations. This protein interacts with enhancer of zeste 2, the cytoplasmic tail of integrin beta7, immunodeficiency virus type 1 (HIV-1) MA protein, and histone deacetylase proteins. This protein mediates repression of gene activity through histone deacetylation, and may act as a specific regulator of integrin function. Two transcript variants encoding distinct isoforms have been identified for this gene.

Note: This product is for in vitro research use only