

## GP9 Antibody

Catalog No: #32813

Package Size: #32813-1 50ul #32813-2 100ul

Orders: [order@signalwayantibody.com](mailto:order@signalwayantibody.com)Support: [tech@signalwayantibody.com](mailto:tech@signalwayantibody.com)

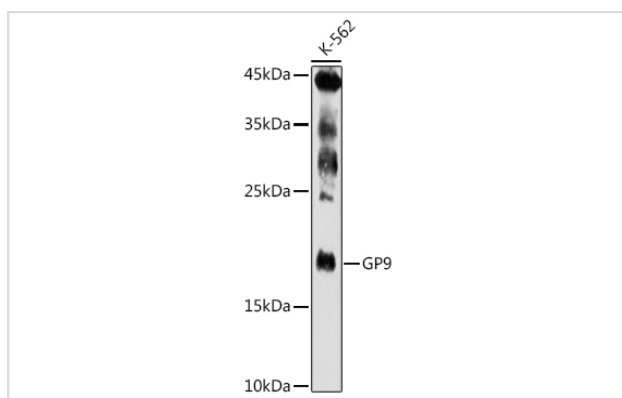
## Description

Product Name	GP9 Antibody
Host Species	Rabbit
Clonality	Polyclonal
Isotype	IgG
Purification	Affinity purification
Applications	WB,IHC
Species Reactivity	Human,Mouse,Rat
Specificity	The antibody detects endogenous level of total GP9 protein.
Immunogen Type	Recombinant Protein
Immunogen Description	Recombinant fusion protein of human GP9 (NP_000165.1).
Target Name	GP9
Other Names	GP9;CD42a;GPIX
Accession No.	Uniprot:P14770GenelD:2815
Uniprot	P14770
GenelD	2815
SDS-PAGE MW	19KDa
Concentration	1.0mg/ml
Formulation	PBS with 0.02% sodium azide,50% glycerol,pH7.3.
Storage	Store at -20°C. Avoid freeze / thaw cycles.

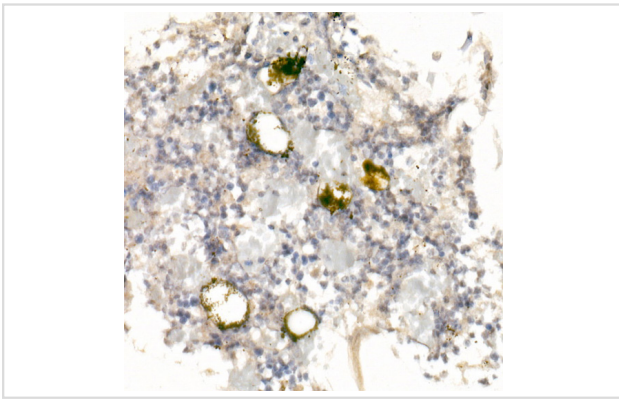
## Application Details

WB 1:500 - 1:2000 IHC 1:50 - 1:200

## Images



Western blot analysis of extracts of K-562 cells, using GP9 antibody.



Immunohistochemistry of paraffin-embedded rat bone marrow using GP9 Rabbit pAb.

## Background

This gene encodes a small membrane glycoprotein found on the surface of human platelets. It forms a 1-to-1 noncovalent complex with glycoprotein Ib, a platelet surface membrane glycoprotein complex that functions as a receptor for von Willebrand factor. The complete receptor complex includes noncovalent association of the alpha and beta subunits with the protein encoded by this gene and platelet glycoprotein V. Defects in this gene are a cause of Bernard-Soulier syndrome, also known as giant platelet disease. These patients have unusually large platelets and have a clinical bleeding tendency.

Note: This product is for in vitro research use only