

## PSMC6 Antibody

Catalog No: #32815

Package Size: #32815-1 50ul #32815-2 100ul

Orders: order@signalwayantibody.com

Support: tech@signalwayantibody.com

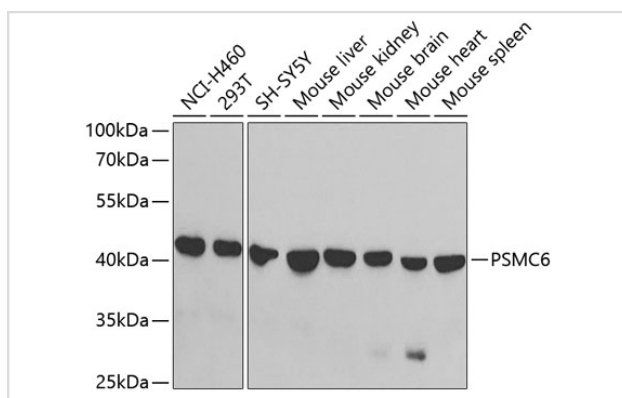
## Description

Product Name	PSMC6 Antibody
Host Species	Rabbit
Clonality	Polyclonal
Isotype	IgG
Purification	Affinity purification
Applications	WB
Species Reactivity	Human,Mouse
Specificity	The antibody detects endogenous level of total PSMC6 protein.
Immunogen Type	Recombinant Protein
Immunogen Description	Recombinant fusion protein of human PSMC6 (NP_002797.3).
Target Name	PSMC6
Other Names	PSMC6;CADP44;HEL-S-73;P44;SUG2;p42;ATPase 6
Accession No.	Uniprot:P62333GeneID:5706
Uniprot	P62333
GeneID	5706
SDS-PAGE MW	45kDa
Concentration	1.0mg/ml
Formulation	PBS with 0.02% sodium azide,50% glycerol,pH7.3.
Storage	Store at -20°C. Avoid freeze / thaw cycles.

## Application Details

WB □ 1:500 - 1:2000

## Images



Western blot analysis of extracts of various cell lines, using PSMC6 antibody.

## Background

---

The 26S proteasome is a multicatalytic proteinase complex with a highly ordered structure composed of 2 complexes, a 20S core and a 19S regulator. The 20S core is composed of 4 rings of 28 non-identical subunits; 2 rings are composed of 7 alpha subunits and 2 rings are composed of 7 beta subunits. The 19S regulator is composed of a base, which contains 6 ATPase subunits and 2 non-ATPase subunits, and a lid, which contains up to 10 non-ATPase subunits. Proteasomes are distributed throughout eukaryotic cells at a high concentration and cleave peptides in an ATP/ubiquitin-dependent process in a non-lysosomal pathway. An essential function of a modified proteasome, the immunoproteasome, is the processing of class I MHC peptides. This gene encodes one of the ATPase subunits, a member of the triple-A family of ATPases which have a chaperone-like activity. Pseudogenes have been identified on chromosomes 8 and 12.

---

Note: This product is for in vitro research use only