

ACTL6A Antibody

Catalog No: #32821

Package Size: #32821-1 50ul #32821-2 100ul

Orders: order@signalwayantibody.comSupport: tech@signalwayantibody.com

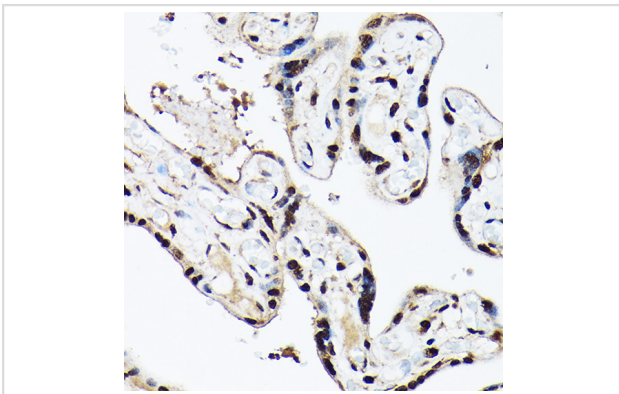
Description

Product Name	ACTL6A Antibody
Host Species	Rabbit
Clonality	Polyclonal
Isotype	IgG
Purification	Affinity purification
Applications	WB,IHC
Species Reactivity	Human,Mouse,Rat
Specificity	The antibody detects endogenous level of total ACTL6A protein.
Immunogen Type	Recombinant Protein
Immunogen Description	Recombinant fusion protein of human ACTL6A (NP_004292.1).
Target Name	ACTL6A
Other Names	ACTL6A;ACTL6;ARPN-BETA;Arp4;BAF53A;INO80K
Accession No.	Uniprot:O96019GeneID:86
Uniprot	O96019
GeneID	86
SDS-PAGE MW	47KDa
Concentration	1.0mg/ml
Formulation	PBS with 0.02% sodium azide,50% glycerol,pH7.3.
Storage	Store at -20°C. Avoid freeze / thaw cycles.

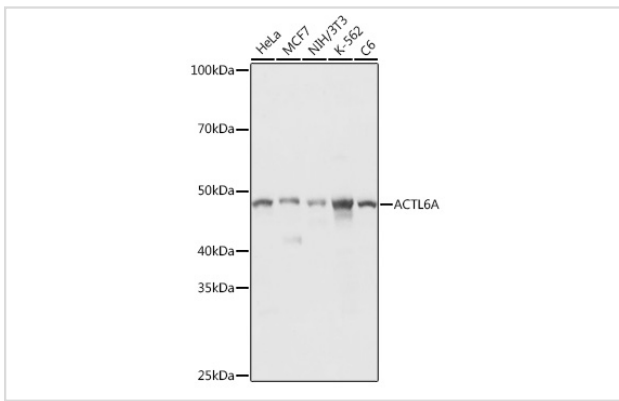
Application Details

WB □ 1:500 - 1:2000 IHC □ 1:50 - 1:200

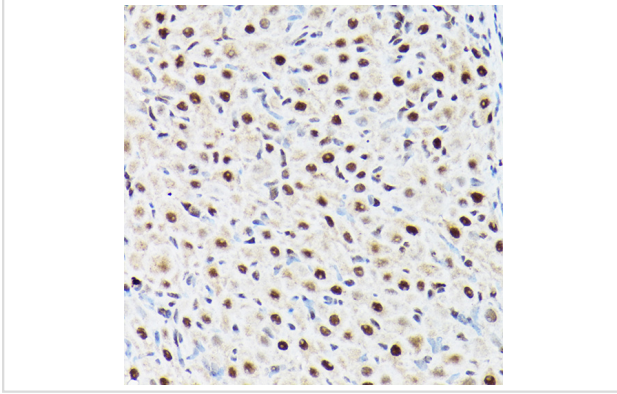
Images



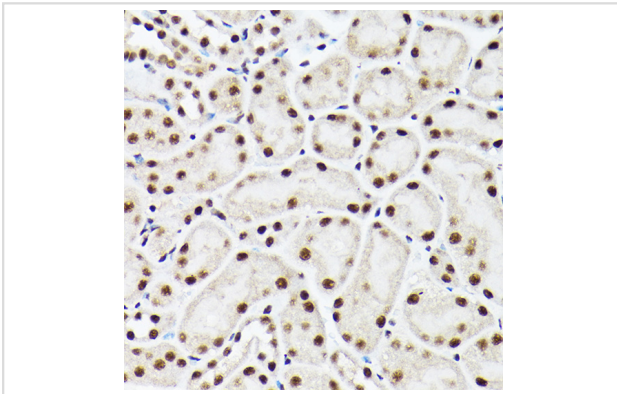
Immunohistochemistry of paraffin-embedded human placenta using ACTL6A Rabbit pAb.



Western blot analysis of extracts of various cell lines, using ACTL6A antibody.



Immunohistochemistry of paraffin-embedded rat ovary using ACTL6A Rabbit pAb.



Immunohistochemistry of paraffin-embedded mouse kidney using ACTL6A Rabbit pAb.

Background

This gene encodes a family member of actin-related proteins (ARPs), which share significant amino acid sequence identity to conventional actins. Both actins and ARPs have an actin fold, which is an ATP-binding cleft, as a common feature. The ARPs are involved in diverse cellular processes, including vesicular transport, spindle orientation, nuclear migration and chromatin remodeling. This gene encodes a 53 kDa subunit protein of the BAF (BRG1/brm-associated factor) complex in mammals, which is functionally related to SWI/SNF complex in *S. cerevisiae* and *Drosophila*; the latter is thought to facilitate transcriptional activation of specific genes by antagonizing chromatin-mediated transcriptional repression. Together with beta-actin, it is required for maximal ATPase activity of BRG1, and for the association of the BAF complex with chromatin/matrix. Three transcript variants that encode two different protein isoforms have been described.

Note: This product is for in vitro research use only