

AMPH Antibody

Catalog No: #32823

Package Size: #32823-1 50ul #32823-2 100ul

Orders: order@signalwayantibody.comSupport: tech@signalwayantibody.com

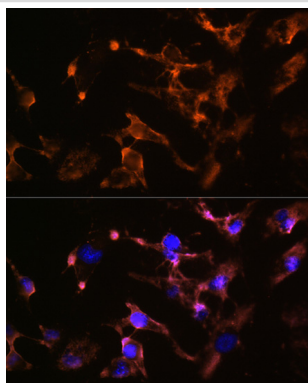
Description

Product Name	AMPH Antibody
Host Species	Rabbit
Clonality	Polyclonal
Isotype	IgG
Purification	Affinity purification
Applications	WB,IF
Species Reactivity	Human,Mouse,Rat
Specificity	The antibody detects endogenous level of total AMPH protein.
Immunogen Type	Recombinant Protein
Immunogen Description	Recombinant fusion protein of human AMPH (NP_001626.1).
Target Name	AMPH
Other Names	AMPH;AMPH1
Accession No.	Uniprot:P49418GeneID:273
Uniprot	P49418
GeneID	273
SDS-PAGE MW	125KDa
Concentration	1.0mg/ml
Formulation	PBS with 0.02% sodium azide,50% glycerol,pH7.3.
Storage	Store at -20°C. Avoid freeze / thaw cycles.

Application Details

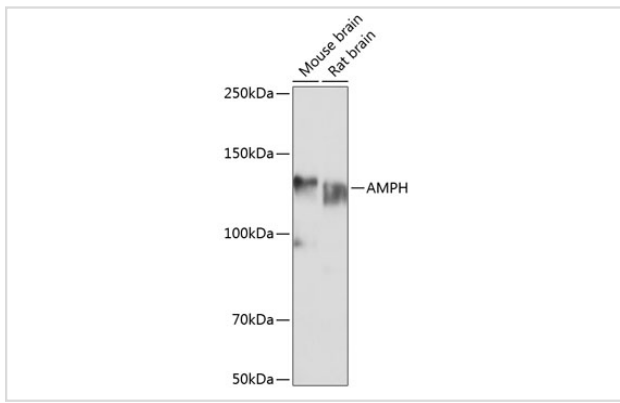
WB \square 1:500 - 1:2000 IF \square 1:50 - 1:200

Images



Immunofluorescence analysis of U-251 MG cells using AMPH Rabbit pAb.

Western blot analysis of extracts of various cell lines, using AMPH Polyclonal Antibody.



Background

This gene encodes a protein associated with the cytoplasmic surface of synaptic vesicles. A subset of patients with stiff-man syndrome who were also affected by breast cancer are positive for autoantibodies against this protein. Alternate splicing of this gene results in two transcript variants encoding different isoforms. Additional splice variants have been described, but their full length sequences have not been determined. A pseudogene of this gene is found on chromosome 11.

Note: This product is for in vitro research use only