

## AP2A2 Antibody

Catalog No: #32825

Package Size: #32825-1 50ul #32825-2 100ul

Orders: [order@signalwayantibody.com](mailto:order@signalwayantibody.com)Support: [tech@signalwayantibody.com](mailto:tech@signalwayantibody.com)

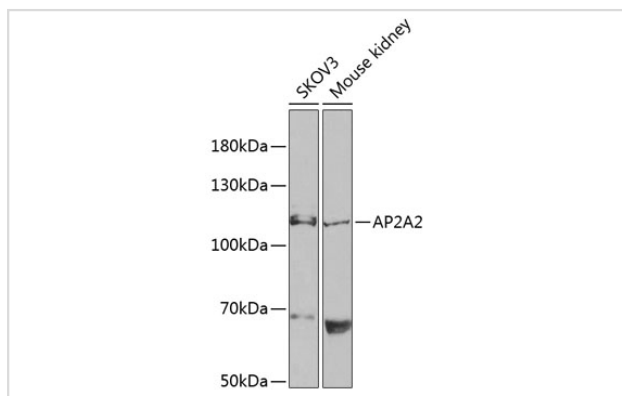
## Description

Product Name	AP2A2 Antibody
Host Species	Rabbit
Clonality	Polyclonal
Isotype	IgG
Purification	Affinity purification
Applications	WB
Species Reactivity	Human,Mouse
Specificity	The antibody detects endogenous level of total AP2A2 protein.
Immunogen Type	Recombinant Protein
Immunogen Description	Recombinant fusion protein of human AP2A2 (NP_036437.1).
Target Name	AP2A2
Other Names	AP2A2;ADTAB;CLAPA2;HIP-9;HIP9;HYPJ
Accession No.	Uniprot:O94973GeneID:161
Uniprot	O94973
GeneID	161
SDS-PAGE MW	104kDa
Concentration	1.0mg/ml
Formulation	PBS with 0.02% sodium azide,50% glycerol,pH7.3.
Storage	Store at -20°C. Avoid freeze / thaw cycles.

## Application Details

WB □ 1:500 - 1:2000

## Images



Western blot analysis of extracts of various cell lines, using AP2A2 antibody.

## Background

---

The protein encoded by this gene is a subunit of the AP-2 adaptor protein complex, which is involved in linking lipid and protein membrane components with the clathrin lattice. This interaction supports the formation of clathrin-coated vesicles, and the encoded subunit aids in the process by binding polyphosphoinositide-containing lipids in the cell membrane.

---

Note: This product is for in vitro research use only