

## ASH2L Antibody

Catalog No: #32826

Package Size: #32826-1 50ul #32826-2 100ul

Orders: order@signalwayantibody.com

Support: tech@signalwayantibody.com

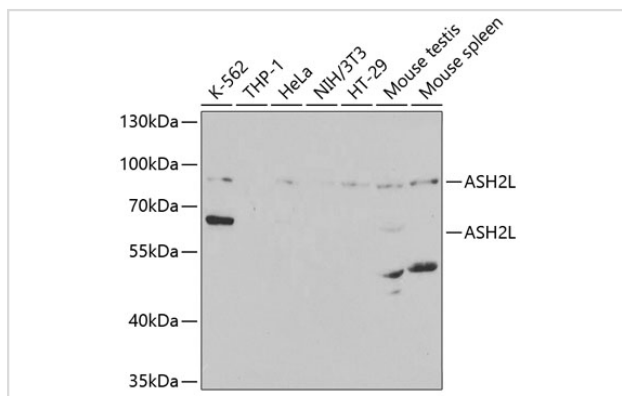
## Description

Product Name	ASH2L Antibody
Host Species	Rabbit
Clonality	Polyclonal
Purification	Antibodies were purified by affinity purification using immunogen.
Applications	WB,IF
Species Reactivity	Human,Mouse
Specificity	The antibody detects endogenous level of total ASH2L protein.
Immunogen Type	Recombinant Protein
Immunogen Description	Recombinant protein of human ASH2L.
Target Name	ASH2L
Other Names	ASH2; Bre2; ASH2L1; ASH2L2;
Accession No.	Swiss-Prot:Q9UBL3NCBI Gene ID:9070
Uniprot	Q9UBL3
GeneID	9070;
SDS-PAGE MW	69KD
Concentration	1.0mg/ml
Formulation	Supplied at 1.0mg/mL in phosphate buffered saline (without Mg <sup>2+</sup> and Ca <sup>2+</sup> ), pH 7.4, 150mM NaCl, 0.02% sodium azide and 50% glycerol.
Storage	Store at -20°C

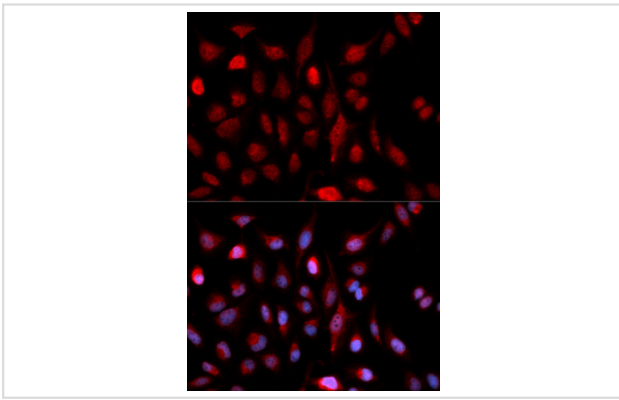
## Application Details

WB □ 1:500 - 1:2000 IF □ 1:20 - 1:50

## Images



Western blot analysis of extracts of various cell lines, using ASH2L at 1:1000 dilution.



Immunofluorescence analysis of U2OS cells using ASH2L .  
Blue: DAPI for nuclear staining.

## Background

Component of the Set1/Ash2 histone methyltransferase (HMT) complex, a complex that specifically methylates 'Lys-4' of histone H3, but not if the neighboring 'Lys-9' residue is already methylated. As part of the MLL1/MLL complex it is involved in methylation and dimethylation at 'Lys-4' of histone H3. May function as a transcriptional regulator. May play a role in hematopoiesis.

Note: This product is for in vitro research use only