

CETN2 Antibody

Catalog No: #32827

Package Size: #32827-1 50ul #32827-2 100ul

Orders: order@signalwayantibody.com

Support: tech@signalwayantibody.com

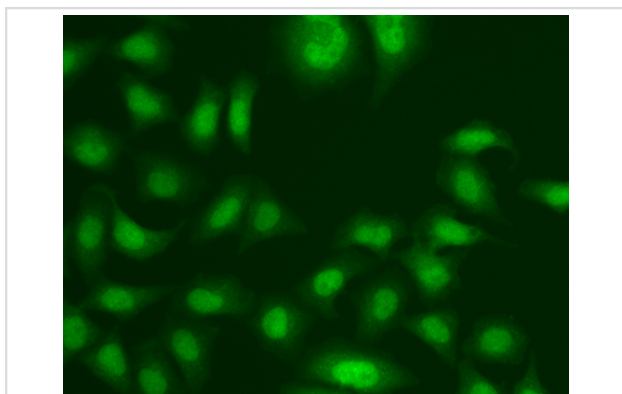
Description

Product Name	CETN2 Antibody
Host Species	Rabbit
Clonality	Polyclonal
Purification	Antibodies were purified by affinity purification using immunogen.
Applications	WB,IF
Species Reactivity	Human,Mouse,Rat
Specificity	The antibody detects endogenous level of total CETN2 protein.
Immunogen Type	Recombinant Protein
Immunogen Description	Recombinant protein of human CETN2.
Target Name	CETN2
Other Names	CALT; CEN2;
Accession No.	Swiss-Prot:P41208NCBI Gene ID:1069
Uniprot	P41208
GeneID	1069;
SDS-PAGE MW	20KD
Concentration	1.0mg/ml
Formulation	Supplied at 1.0mg/mL in phosphate buffered saline (without Mg ²⁺ and Ca ²⁺), pH 7.4, 150mM NaCl, 0.02% sodium azide and 50% glycerol.
Storage	Store at -20°C

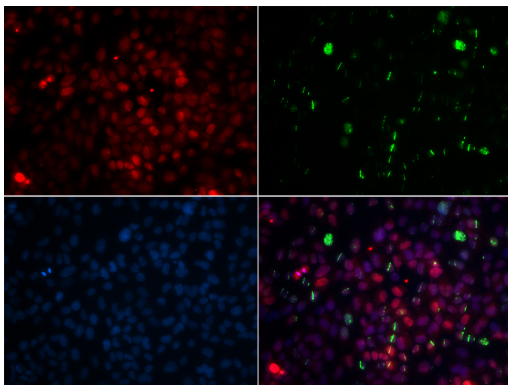
Application Details

WB \square 1:500 - 1:2000IF \square 1:50 - 1:200

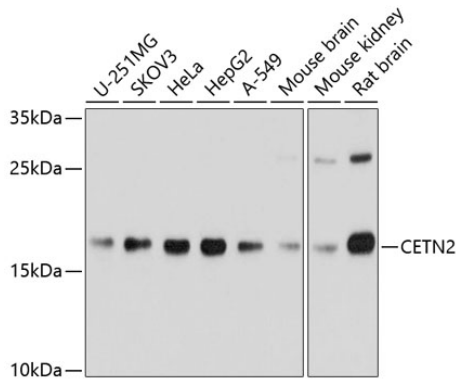
Images



Immunofluorescence analysis of A549 cells using CETN2 .



Immunofluorescence analysis of GFP-RNF168 transgenic U2OS cells using CETN2 . Green $\Omega\frac{1}{2}\Omega\frac{1}{2}$ GFP-RNF168 fusion protein expression for DNA damage marker. Blue: DAPI for nuclear staining. RNF168 (GFP) can be used to mark cells damaged by UV-A laser for they always gather around DNA damage region.



Western blot analysis of extracts of various cell lines, using CETN2 at 1:1000 dilution.

Background

Caltractin belongs to a family of calcium-binding proteins and is a structural component of the centrosome. The high level of conservation from algae to humans and its association with the centrosome suggested that caltractin plays a fundamental role in the structure and function of the microtubule-organizing center, possibly required for the proper duplication and segregation of the centrosome.

Note: This product is for in vitro research use only