

## CBR1 Antibody

Catalog No: #32853

Package Size: #32853-1 50ul #32853-2 100ul

Orders: order@signalwayantibody.com

Support: tech@signalwayantibody.com

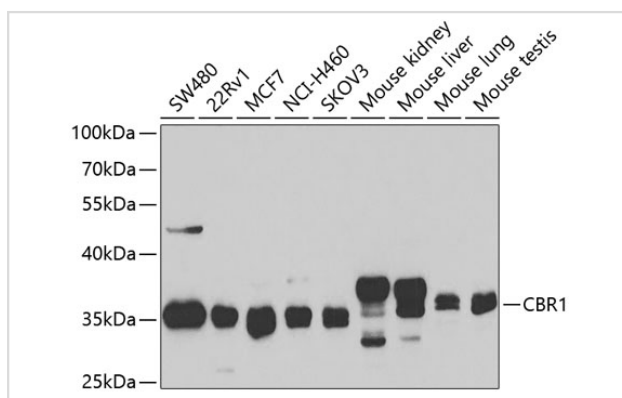
## Description

Product Name	CBR1 Antibody
Host Species	Rabbit
Clonality	Polyclonal
Isotype	IgG
Purification	Affinity purification
Applications	WB
Species Reactivity	Human,Mouse
Specificity	The antibody detects endogenous level of total CBR1 protein.
Immunogen Type	Recombinant Protein
Immunogen Description	Recombinant fusion protein of human CBR1 (NP_001748.1).
Target Name	CBR1
Other Names	CBR1;CBR;SDR21C1;hCBR1
Accession No.	Uniprot:P16152GenelD:873
Uniprot	P16152
GenelD	873
SDS-PAGE MW	35kDa
Concentration	1.0mg/ml
Formulation	PBS with 0.02% sodium azide,50% glycerol,pH7.3.
Storage	Store at -20°C. Avoid freeze / thaw cycles.

## Application Details

WB □ 1:500 - 1:2000

## Images



Western blot analysis of extracts of various cell lines, using CBR1 antibody.

## Background

---

The protein encoded by this gene belongs to the short-chain dehydrogenases/reductases (SDR) family, which function as NADPH-dependent oxidoreductases having wide specificity for carbonyl compounds, such as quinones, prostaglandins, and various xenobiotics. Alternatively spliced transcript variants have been found for this gene.

---

Note: This product is for in vitro research use only