

APLP2 Antibody

Catalog No: #32858

Package Size: #32858-1 50ul #32858-2 100ul

Orders: order@signalwayantibody.com

Support: tech@signalwayantibody.com

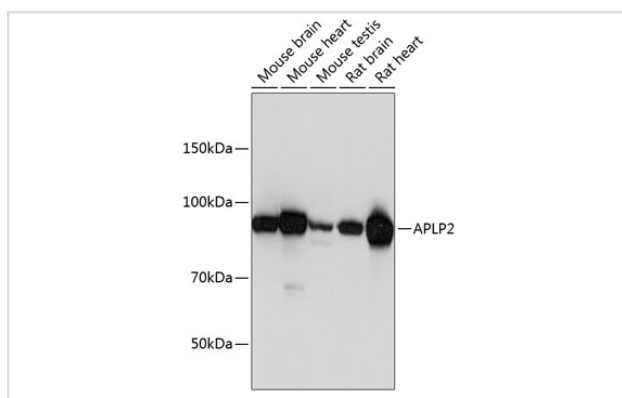
Description

Product Name	APLP2 Antibody
Host Species	Rabbit
Clonality	Polyclonal
Isotype	IgG
Purification	Affinity purification
Applications	WB,IF
Species Reactivity	Human,Mouse,Rat
Specificity	The antibody detects endogenous level of total APLP2 protein.
Immunogen Type	Recombinant Protein
Immunogen Description	Recombinant fusion protein of human APLP2 (NP_001135750.1).
Target Name	APLP2
Other Names	APLP2;APLP-2;APPH;APPL2;CDEBP
Accession No.	Uniprot:Q06481GeneID:334
Uniprot	Q06481
GeneID	334
SDS-PAGE MW	87KDa
Concentration	1.0mg/ml
Formulation	PBS with 0.02% sodium azide,50% glycerol,pH7.3.
Storage	Store at -20°C. Avoid freeze / thaw cycles.

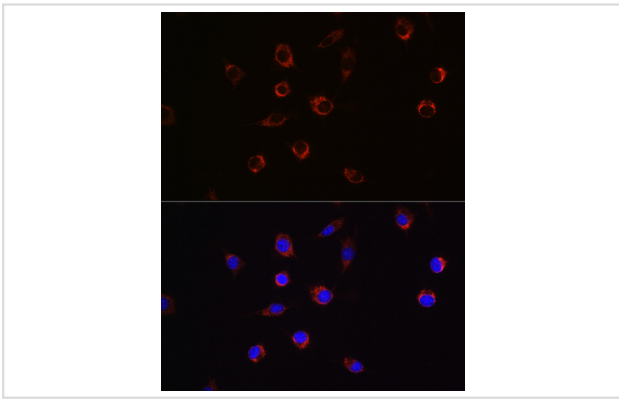
Application Details

WB □ 1:500 - 1:2000 IF □ 1:50 - 1:200

Images



Western blot analysis of extracts of various cell lines, using APLP2 Polyclonal Antibody.



Immunofluorescence analysis of L929 cells using APLP2 Rabbit pAb.

Background

This gene encodes amyloid precursor- like protein 2 (APLP2), which is a member of the APP (amyloid precursor protein) family including APP, APLP1 and APLP2. This protein is ubiquitously expressed. It contains heparin-, copper- and zinc- binding domains at the N-terminus, BPTI/Kunitz inhibitor and E2 domains in the middle region, and transmembrane and intracellular domains at the C-terminus. This protein interacts with major histocompatibility complex (MHC) class I molecules. The synergy of this protein and the APP is required to mediate neuromuscular transmission, spatial learning and synaptic plasticity. This protein has been implicated in the pathogenesis of Alzheimer's disease. Multiple alternatively spliced transcript variants encoding different isoforms have been identified.

Note: This product is for in vitro research use only