

LBR Antibody

Catalog No: #32868

Package Size: #32868-1 50ul #32868-2 100ul

Orders: order@signalwayantibody.comSupport: tech@signalwayantibody.com

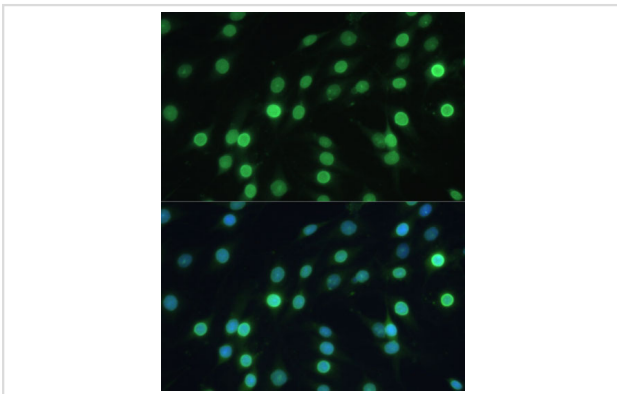
Description

Product Name	LBR Antibody
Host Species	Rabbit
Clonality	Polyclonal
Isotype	IgG
Purification	Affinity purification
Applications	WB,IF
Species Reactivity	Human,Mouse,Rat
Specificity	The antibody detects endogenous level of total LBR protein.
Immunogen Type	Recombinant Protein
Immunogen Description	Recombinant fusion protein of human LBR (NP_002287.2).
Target Name	LBR
Other Names	LBR;DHCR14B;LMN2R;PHA;TDRD18
Accession No.	Uniprot:Q14739GeneID:3930
Uniprot	Q14739
GeneID	3930
SDS-PAGE MW	68kDa
Concentration	1.0mg/ml
Formulation	PBS with 0.02% sodium azide,50% glycerol,pH7.3.
Storage	Store at -20°C. Avoid freeze / thaw cycles.

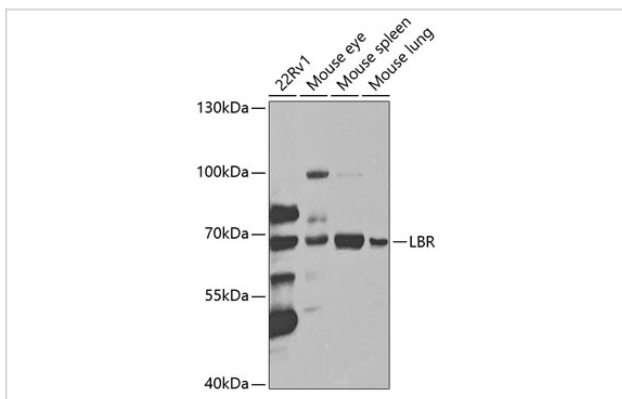
Application Details

WB □ 1:500 - 1:2000 IF □ 1:50 - 1:100

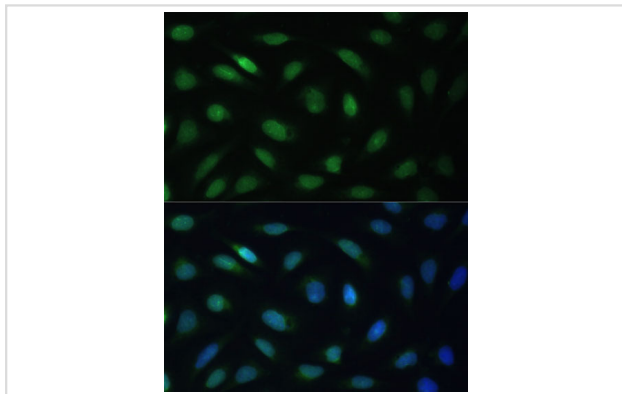
Images



Immunofluorescence analysis of C6 cells using LBR Polyclonal Antibody.



Western blot analysis of extracts of various cell lines, using LBR antibody.



Immunofluorescence analysis of U-2 OS cells using LBR Polyclonal Antibody.

Background

The protein encoded by this gene belongs to the ERG4/ERG24 family. It localized in the nuclear envelope inner membrane and anchors the lamina and the heterochromatin to the membrane. It may mediate interaction between chromatin and lamin B. Mutations of this gene has been associated with autosomal recessive HEM/Greenberg skeletal dysplasia. Alternative splicing occurs at this locus and two transcript variants encoding the same protein have been identified.

Note: This product is for in vitro research use only