

MCPH1 Antibody

Catalog No: #32871

Package Size: #32871-1 50ul #32871-2 100ul

Orders: order@signalwayantibody.com

Support: tech@signalwayantibody.com

Description

Product Name	MCPH1 Antibody
Host Species	Rabbit
Clonality	Polyclonal
Purification	The antibody was affinity-purified from rabbit antiserum by affinity-chromatography using epitope-specific immunogen.
Applications	WB;IHC;IF
Species Reactivity	Human,Mouse
Specificity	The antibody detects endogenous level of total MCPH1 protein.
Immunogen Type	Peptide
Immunogen Description	The antiserum was produced against synthesized peptide derived from human MCPH1
Target Name	MCPH1
Other Names	MCT; BRIT1;
Accession No.	Swiss-Prot:Q8NEM0NCBI Gene ID:79648
Uniprot	Q8NEM0
GeneID	79648;
SDS-PAGE MW	93KD
Concentration	1.0mg/ml
Formulation	Liquid in PBS containing 50% glycerol, 0.5% BSA and 0.02% sodium azide.
Storage	Store at -20°C

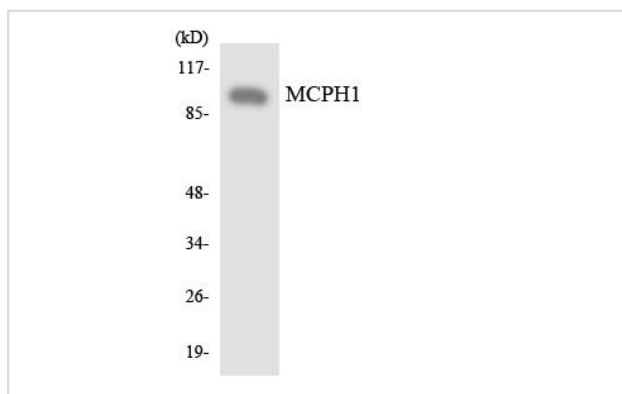
Application Details

WB 1:500-1:2000;

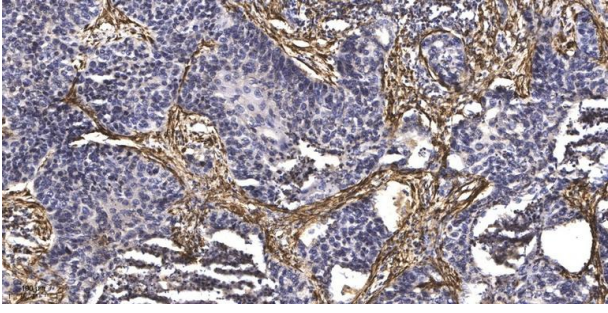
IHC 1:100-1:300;

IF 1:50-200

Images



Western blot analysis of the lysates from HT-29 cells using MCPH1 antibody.



Immunohistochemical analysis of paraffin-embedded human Squamous cell carcinoma of lung. 1, Antibody was diluted at 1:200(4° overnight). 2, Tris-EDTA,pH9.0 was used for antigen retrieval. 3,Secondary antibody was diluted at 1:200(room temperature, 45min).

Background

This gene encodes a DNA damage response protein. The encoded protein may play a role in G2/M checkpoint arrest via maintenance of inhibitory phosphorylation of cyclin-dependent kinase 1. Mutations in this gene have been associated with primary autosomal recessive microcephaly 1 and premature chromosome condensation syndrome. Alternatively spliced transcript variants have been described.

Note: This product is for in vitro research use only