

Smad1(Ab-465) Antibody

Catalog No: #21321

Package Size: #21321-1 50ul #21321-2 100ul

Orders: order@signalwayantibody.com

Support: tech@signalwayantibody.com

Description

Product Name	Smad1(Ab-465) Antibody
Host Species	Rabbit
Clonality	Polyclonal
Purification	Antibodies were produced by immunizing rabbits with synthetic peptide and KLH conjugates. Antibodies were purified by affinity-chromatography using epitope-specific peptide.
Applications	WB IF
Species Reactivity	Hu Ms Rt
Specificity	The antibody detects endogenous level of total Smad1 protein.
Immunogen Type	Peptide-KLH
Immunogen Description	Peptide sequence around aa. 461~465 (I-S-S-V-S) derived from Human Smad1.
Target Name	Smad1
Other Names	Mad-related protein 1; SMAD 1; hSMAD1; Transforming growth factor-beta-signaling protein 1;
Accession No.	Swiss-Prot: Q15797NCBI Protein: NP_001003688.1
Uniprot	Q15797
GeneID	4086;
Concentration	1.0mg/ml
Formulation	Supplied at 1.0mg/mL in phosphate buffered saline (without Mg ²⁺ and Ca ²⁺), pH 7.4, 150mM NaCl, 0.02% sodium azide and 50% glycerol.
Storage	Store at -20°C for long term preservation (recommended). Store at 4°C for short term use.

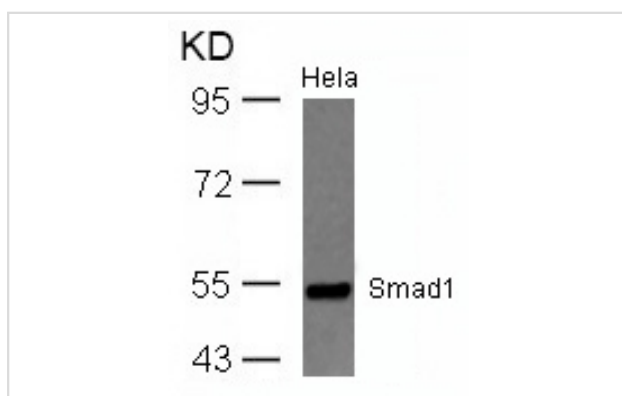
Application Details

Predicted MW: 55kd

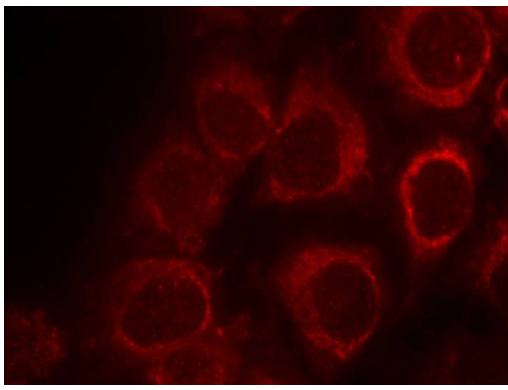
Western blotting: 1:500~1:1000

Immunofluorescence: 1:100~1:200

Images



Western blot analysis of extracts from HeLa cells using Smad1(Ab-465) Antibody #21321.



Immunofluorescence staining of methanol-fixed HeLa cells using Smad1(Ab-465) Antibody #21321.

Background

Transcriptional modulator activated by BMP (bone morphogenetic proteins) type 1 receptor kinase. SMAD1 is a receptor-regulated SMAD (R-SMAD).
Hiroaki Seto, et al. (2004) J Clin Invest. March 1; 113(5): 718

Note: This product is for in vitro research use only