

PSMB2 Antibody

Catalog No: #32878

Package Size: #32878-1 50ul #32878-2 100ul

Orders: order@signalwayantibody.com

Support: tech@signalwayantibody.com

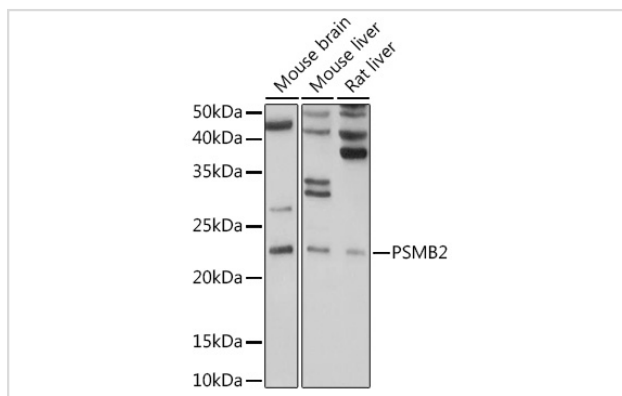
Description

Product Name	PSMB2 Antibody
Host Species	Rabbit
Clonality	Polyclonal
Isotype	IgG
Purification	Affinity purification
Applications	WB,IHC
Species Reactivity	Human,Mouse,Rat
Specificity	The antibody detects endogenous level of total PSMB2 protein.
Immunogen Type	Recombinant Protein
Immunogen Description	Recombinant fusion protein of human PSMB2 (NP_002785.1).
Target Name	PSMB2
Other Names	PSMB2;HC7-I
Accession No.	Uniprot:P49721GenelD:5690
Uniprot	P49721
GenelD	5690
SDS-PAGE MW	23KDa
Concentration	1.0mg/ml
Formulation	PBS with 0.02% sodium azide,50% glycerol,pH7.3.
Storage	Store at -20°C. Avoid freeze / thaw cycles.

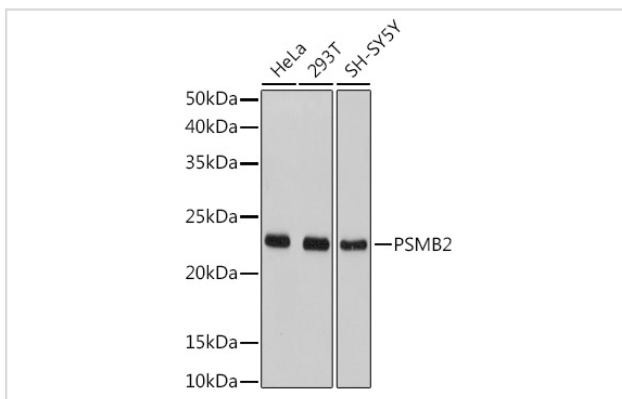
Application Details

WB □ 1:500 - 1:2000 IHC □ 1:50 - 1:200

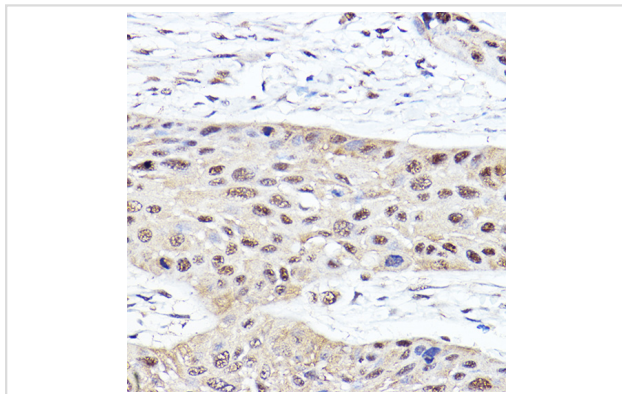
Images



Western blot analysis of extracts of various cell lines, using PSMB2 antibody.



Western blot analysis of extracts of various cell lines, using PSMB2 antibody.



Immunohistochemistry of paraffin-embedded human esophageal cancer using PSMB2 Rabbit pAb.

Background

The proteasome is a multicatalytic proteinase complex with a highly ordered ring-shaped 20S core structure. The core structure is composed of 4 rings of 28 non-identical subunits; 2 rings are composed of 7 alpha subunits and 2 rings are composed of 7 beta subunits. Proteasomes are distributed throughout eukaryotic cells at a high concentration and cleave peptides in an ATP/ubiquitin-dependent process in a non-lysosomal pathway. An essential function of a modified proteasome, the immunoproteasome, is the processing of class I MHC peptides. This gene encodes a member of the proteasome B-type family, also known as the T1B family, that is a 20S core beta subunit. Multiple alternatively spliced transcript variants encoding distinct isoforms have been found for this gene.

Note: This product is for in vitro research use only