

RFC4 Antibody

Catalog No: #32880

Package Size: #32880-1 50ul #32880-2 100ul

Orders: order@signalwayantibody.com

Support: tech@signalwayantibody.com

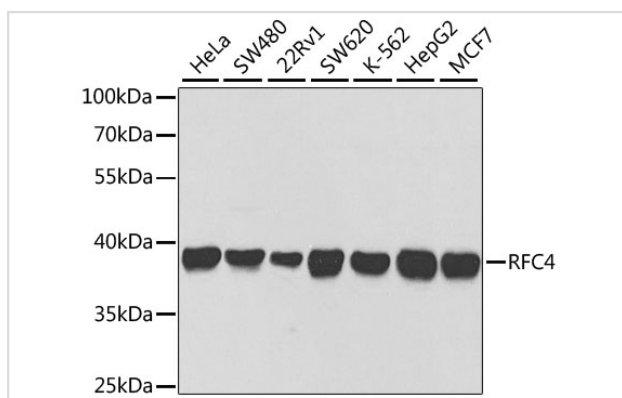
Description

Product Name	RFC4 Antibody
Host Species	Rabbit
Clonality	Polyclonal
Isotype	IgG
Purification	Affinity purification
Applications	WB,IF
Species Reactivity	Human,Rat
Specificity	The antibody detects endogenous level of total RFC4 protein.
Immunogen Type	Recombinant Protein
Immunogen Description	Recombinant fusion protein of human RFC4 (NP_002907.1).
Target Name	RFC4
Other Names	RFC4;A1;RFC37
Accession No.	Uniprot:P35249GenID:5984
Uniprot	P35249
GenID	5984
SDS-PAGE MW	40kDa
Concentration	1.0mg/ml
Formulation	PBS with 0.02% sodium azide,50% glycerol,pH7.3.
Storage	Store at -20°C. Avoid freeze / thaw cycles.

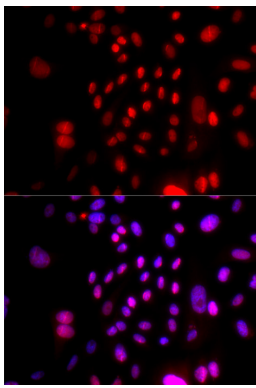
Application Details

WB □ 1:500 - 1:2000 IF □ 1:50 - 1:100

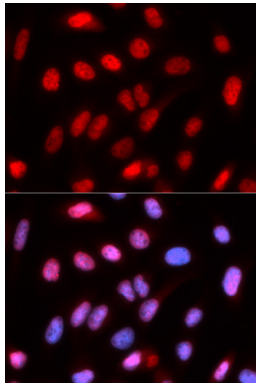
Images



Western blot analysis of extracts of various cell lines, using RFC4 antibody.



Immunofluorescence analysis of U2OS cells using RFC4 antibody.



Immunofluorescence analysis of U2OS cells using RFC4 antibody.

Background

The elongation of primed DNA templates by DNA polymerase delta and DNA polymerase epsilon requires the accessory proteins proliferating cell nuclear antigen (PCNA) and replication factor C (RFC). RFC, also named activator 1, is a protein complex consisting of five distinct subunits of 140, 40, 38, 37, and 36 kD. This gene encodes the 37 kD subunit. This subunit forms a core complex with the 36 and 40 kDa subunits. The core complex possesses DNA-dependent ATPase activity, which was found to be stimulated by PCNA in an in vitro system. Alternatively spliced transcript variants encoding the same protein have been reported.

Note: This product is for in vitro research use only