

S100A11 Antibody

Catalog No: #32881

Package Size: #32881-1 50ul #32881-2 100ul

Orders: order@signalwayantibody.com

Support: tech@signalwayantibody.com

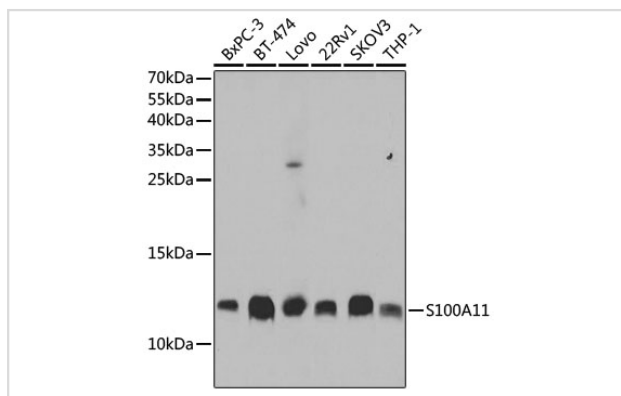
Description

Product Name	S100A11 Antibody
Host Species	Rabbit
Clonality	Polyclonal
Isotype	IgG
Purification	Affinity purification
Applications	WB,IF
Species Reactivity	Human
Specificity	The antibody detects endogenous level of total S100A11 protein.
Immunogen Type	Recombinant Protein
Immunogen Description	Recombinant fusion protein of human S100A11 (NP_005611.1).
Target Name	S100A11
Other Names	S100A11;HEL-S-43;MLN70;S100C
Accession No.	Uniprot:P31949GenelD:6282
Uniprot	P31949
GenelD	6282
SDS-PAGE MW	12kDa
Concentration	1.0mg/ml
Formulation	PBS with 0.02% sodium azide,50% glycerol,pH7.3.
Storage	Store at -20°C. Avoid freeze / thaw cycles.

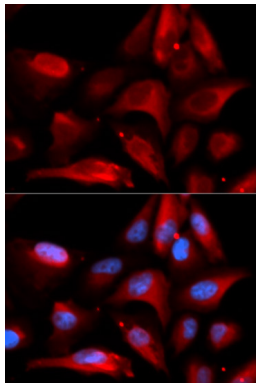
Application Details

WB □ 1:500 - 1:2000 IF □ 1:50 - 1:200

Images



Western blot analysis of extracts of various cell lines, using S100A11 antibody.



Immunofluorescence analysis of U2OS cells using S100A11 antibody.

Background

The protein encoded by this gene is a member of the S100 family of proteins containing 2 EF-hand calcium-binding motifs. S100 proteins are localized in the cytoplasm and/or nucleus of a wide range of cells, and involved in the regulation of a number of cellular processes such as cell cycle progression and differentiation. S100 genes include at least 13 members which are located as a cluster on chromosome 1q21. This protein may function in motility, invasion, and tubulin polymerization. Chromosomal rearrangements and altered expression of this gene have been implicated in tumor metastasis.

Note: This product is for in vitro research use only