

CALCA Antibody

Catalog No: #32898

Package Size: #32898-1 50ul #32898-2 100ul

Orders: order@signalwayantibody.com

Support: tech@signalwayantibody.com

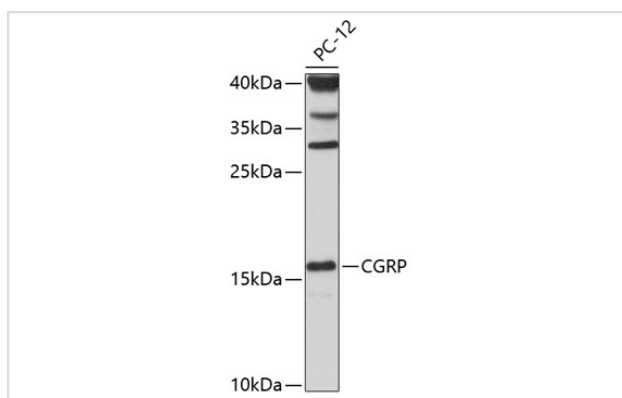
Description

Product Name	CALCA Antibody
Host Species	Rabbit
Clonality	Polyclonal
Purification	Antibodies were purified by affinity purification using immunogen.
Applications	WB,IF
Species Reactivity	Human,Mouse,Rat
Specificity	The antibody detects endogenous level of total CALCA protein.
Immunogen Type	Recombinant Protein
Immunogen Description	Recombinant protein of human CALCA.
Target Name	CALCA
Other Names	CT; KC; CGRP; CALC1; CGRP1
Accession No.	Swiss-Prot:P06881NCBI Gene ID:796
Uniprot	P06881
GeneID	796;
SDS-PAGE MW	13KD
Concentration	1.0mg/ml
Formulation	Supplied at 1.0mg/mL in phosphate buffered saline (without Mg ²⁺ and Ca ²⁺), pH 7.4, 150mM NaCl, 0.02% sodium azide and 50% glycerol.
Storage	Store at -20°C

Application Details

WB □ 1:500 - 1:2000 IF □ 1:50 - 1:200

Images



Western blot analysis of extracts of Jurkat cells, using CGRP at 1:1000 dilution.

Background

This gene encodes the peptide hormones calcitonin, calcitonin gene-related peptide and katacalcin by tissue-specific alternative RNA splicing of the gene transcripts and cleavage of inactive precursor proteins. Calcitonin is involved in calcium regulation and acts to regulate phosphorus metabolism. Calcitonin gene-related peptide functions as a vasodilator while katacalcin is a calcium-lowering peptide. Multiple transcript variants encoding different isoforms have been found for this gene.

Note: This product is for in vitro research use only