

HAX1 Antibody

Catalog No: #32902

Package Size: #32902-1 50ul #32902-2 100ul

Orders: order@signalwayantibody.comSupport: tech@signalwayantibody.com

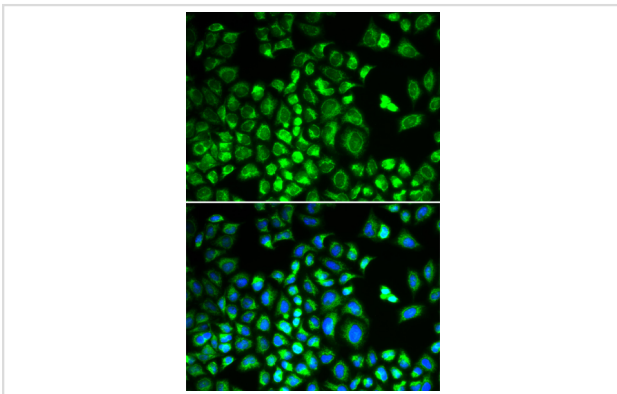
Description

Product Name	HAX1 Antibody
Host Species	Rabbit
Clonality	Polyclonal
Isotype	IgG
Purification	Affinity purification
Applications	WB,IF
Species Reactivity	Human,Mouse,Rat
Specificity	The antibody detects endogenous level of total HAX1 protein.
Immunogen Type	Recombinant Protein
Immunogen Description	Recombinant fusion protein of human HAX1 (NP_006109.2).
Target Name	HAX1
Other Names	HAX1;HCLSBP1;HS1BP1;SCN3
Accession No.	Uniprot:O00165GeneID:10456
Uniprot	O00165
GeneID	10456
SDS-PAGE MW	36kDa
Concentration	1.0mg/ml
Formulation	PBS with 0.02% sodium azide,50% glycerol,pH7.3.
Storage	Store at -20°C. Avoid freeze / thaw cycles.

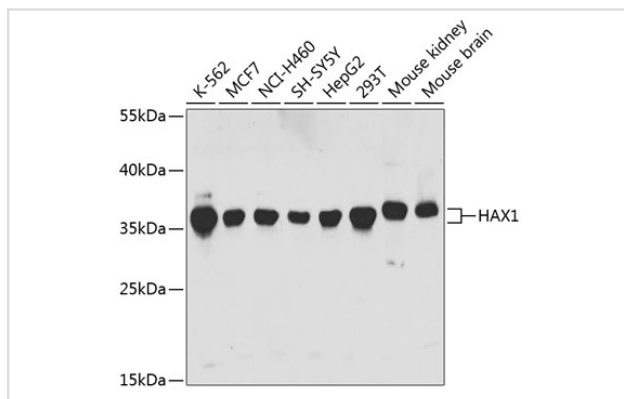
Application Details

WB \square 1:500 - 1:2000 IF \square 1:10 - 1:100

Images



Immunofluorescence analysis of A549 cells using HAX1 antibody.



Western blot analysis of extracts of various cell lines, using HAX1 antibody.

Background

The protein encoded by this gene is known to associate with hematopoietic cell-specific Lyn substrate 1, a substrate of Src family tyrosine kinases. It also interacts with the product of the polycystic kidney disease 2 gene, mutations in which are associated with autosomal-dominant polycystic kidney disease, and with the F-actin-binding protein, cortactin. It was earlier thought that this gene product is mainly localized in the mitochondria, however, recent studies indicate it to be localized in the cell body. Mutations in this gene result in autosomal recessive severe congenital neutropenia, also known as Kostmann disease. Two transcript variants encoding different isoforms have been found for this gene.

Note: This product is for in vitro research use only