

## MCM5 Antibody

Catalog No: #32907

Package Size: #32907-1 50ul #32907-2 100ul

Orders: order@signalwayantibody.com

Support: tech@signalwayantibody.com

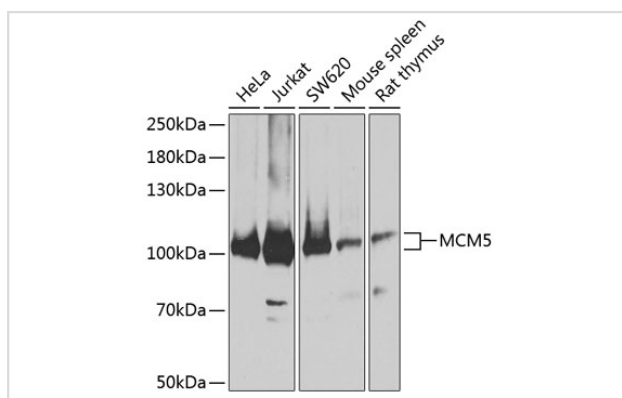
## Description

Product Name	MCM5 Antibody
Host Species	Rabbit
Clonality	Polyclonal
Purification	Antibodies were purified by affinity purification using immunogen.
Applications	WB,IF
Species Reactivity	Human,Mouse,Rat
Specificity	The antibody detects endogenous level of total MCM5 protein.
Immunogen Type	Recombinant Protein
Immunogen Description	Recombinant protein of human MCM5.
Target Name	MCM5
Other Names	CDC46; P1-CDC46;
Accession No.	Swiss-Prot:P33992NCBI Gene ID:4174
Uniprot	P33992
GeneID	4174;
SDS-PAGE MW	82KD
Concentration	1.0mg/ml
Formulation	Supplied at 1.0mg/mL in phosphate buffered saline (without Mg <sup>2+</sup> and Ca <sup>2+</sup> ), pH 7.4, 150mM NaCl, 0.02% sodium azide and 50% glycerol.
Storage	Store at -20°C

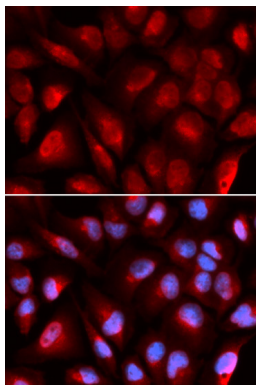
## Application Details

WB □ 1:1000 - 1:3000IF □ 1:50 - 1:200

## Images



Western blot analysis of extracts of various cell lines, using MCM5 at 1:3000 dilution.



Immunofluorescence analysis of U2OS cells using MCM5 .  
Blue: DAPI for nuclear staining.

## Background

The protein encoded by this gene is structurally very similar to the CDC46 protein from *S. cerevisiae*, a protein involved in the initiation of DNA replication. The encoded protein is a member of the MCM family of chromatin-binding proteins and can interact with at least two other members of this family. The encoded protein is upregulated in the transition from the G0 to G1/S phase of the cell cycle and may actively participate in cell cycle regulation.

Note: This product is for in vitro research use only